

Trim & Auxiliary



At Hager Companies, we know all about the importance of adding the right finishing touches to your building projects. That's why we're proud to offer more than 200 different trim and auxiliary door hardware products in a variety of designs, sizes, and finishes that not only look great, but also provide long-lasting wear in any application. Whatever you need, from pulls to push plates, protection plates to door edgings, wall and floor stops to flush bolts, coordinators, signage, and much more--Hager trim and auxiliary products give you great looks and proven durability.



TRIM & AUXILIARY

MANUFACTURING OPTIONS

Hager Companies can deliver custom door pulls made to your specifications, or choose from our collection of pull designs. Hager's comprehensive selection of door pull hardware includes standard push/pull bars or multiple push bar combinations with center-to-centers made to order.

PUSH/PULL PLATE DETAILS

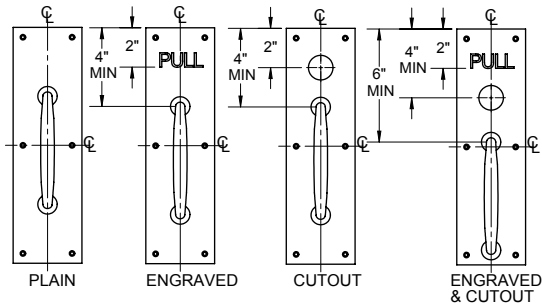
Standard Grip Positions

Pulls are centered vertically or lowered when necessary to meet minimum top spacing requirement. Be certain the pull selected will fit on specified plate under these conditions.

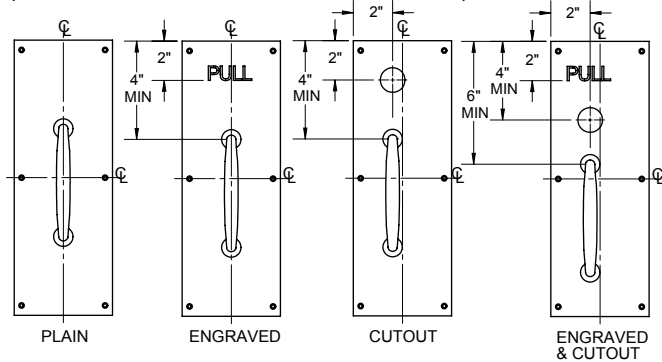
Special Pull Positions

Where pairs of doors are involved and active leaf pull plate is lettered or has a cutout, order pull plate for inactive leaf Grip To Align (WOC). This will ensure horizontal alignment of pull on both plates. Always furnish complete details when ordering non-standard pull positions.

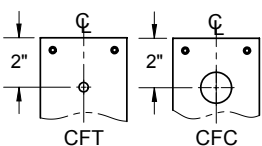
PULL PLATES UP TO 4" WIDE



PULL PLATES OVER 4" WIDE (HANDING REQUIRED WITH CUTOUTS)



Cut Outs



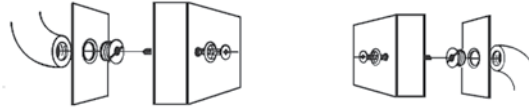
Standard cutout sizes: Cut for Cylinder (CFC) – 1 1/4" (32 mm) diameter; Cut for Thumbturn (CFT) – 3/8" (10 mm) diameter.

All plates may be ordered with cutout option by adding the appropriate suffix (i.e., 30S-CFC).

Standard cutouts are positioned 2" (51 mm) from top of plate where this option has been ordered. Cutouts are centered

on plates up to 4" (102 mm) wide or 2" (51 mm) from edge of plates over 4" (102 mm) wide. The latter are "handed" with cutouts. Furnish hand of door when ordering. Provide complete details for all non-standard cutouts.

Flush Back Mounting



Pull plates using #3, 4, or 10 pull types can be furnished with a flush back (no projections). Specify code FB, (i.e., 33E-FB). Note: Use thru-bolts supplied with mountings for best security.

Back-To-Back Mounting

Many pulls may be ordered back-to-back (BTB) and availability will be noted on each particular product page (refer to product page). Specify the correct part number and center-to-center unless already specified.

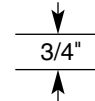
Handicap Option

Pulls that must meet the 2-1/2" (64 mm) clearance for ADA requirements are available. Must specify part number with prefix "H" (i.e., H2E). Please refer to each individual part number for availability.

Engraving

Typical engraved lettering is in Helvetica style and colored black. On push or pull plates, standard position is horizontal on a line 2" (51 mm) from top of plate.

PUSH PULL





Fasteners

Illustrated below are various types of fasteners that can be furnished by Hager Companies. Please specify type of fastening desired. All types of fastening cannot be used with all items of hardware. If specified method is not possible, we reserve the right to furnish whatever type we feel is best suited for the installation. When used with tempered glass doors, specify thickness of glass and hole diameter.



Sex bolt and machine screws
(various sizes)



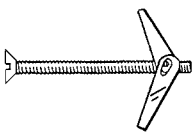
Lead anchor
(used with floor stops in masonry applications)



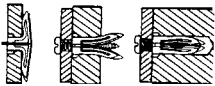
Plastic anchor and full threaded screw
(used in drywall or masonry applications)



Lag screw and shield



Toggle bolt
(ideal for drywall applications)



Plastic toggle anchor
(used with wall stops in drywall applications)



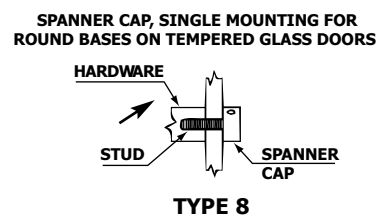
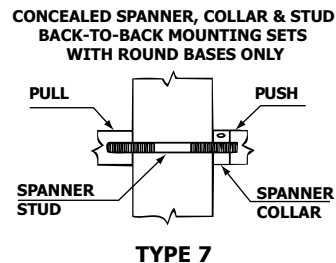
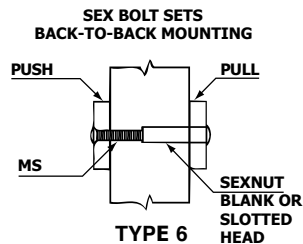
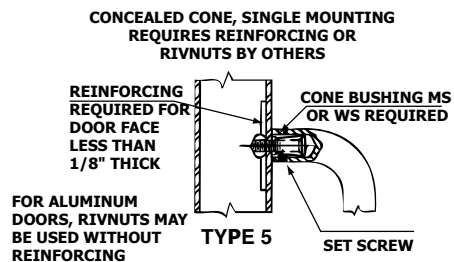
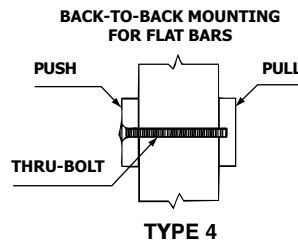
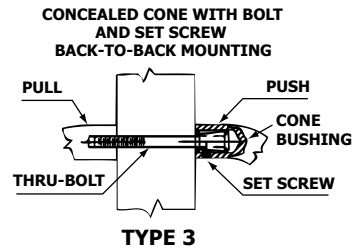
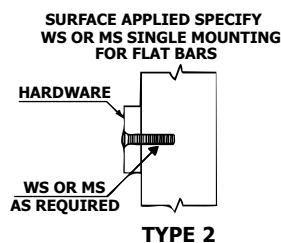
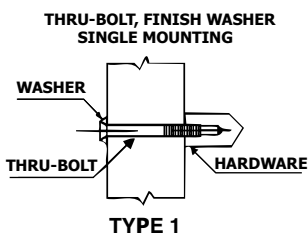
Thru-bolt and finish washer
(flat or oval head; size as required)



Spanner head machine screws
(various sizes furnished at extra charge)



Security torx head machine screws
(various sizes furnished at extra charge)





TRIM & AUXILIARY

METAL FINISH SYMBOLS

US & Hager	Description	Base Material	BHMA Symbol
2C	Zinc Plated Steel	Steel	603
3	Bright Brass	Brass	605
4	Satin Brass	Brass	606
5	Satin Brass, Oxidized	Brass/Bronze	609
9	Bright Bronze	Brass/Bronze	611
10	Satin Bronze	Brass/Bronze	612
10B	Antique Bronze, Oiled	Brass/Bronze	613
10R	Matte Lacquer Antique Bronze	Brass/Bronze	-
15	Satin Nickel	Brass/Bronze	619
15A	Satin Nickel Oxidized	Brass/Bronze	620
19	Flat Black Coated	Brass	622
26	Bright Chromium Plated	Brass/Bronze	625
26D	Satin Chromium Plated	Brass/Bronze	626
28	Satin Anodized Aluminum	Aluminum	628
32	Stainless Steel Metal, Bright	300 Series	629
32D	Stainless Steel Metal, Satin	300 Series	630
L2	Duro	-	-
PC	Clear Plastic	-	-
PK	Plastic Laminate - Black	-	-
CO	Plastic Laminate - Chocolate	-	-
PG	Plastic Laminate - Grey	-	-
S1	Sprayed Aluminum	Cast Iron	-
S2	Sprayed Brass	Cast Iron	-
S3	Sprayed Bronze	Cast Iron	-

Note: For any finish not listed in this catalog, or explained above, availability on request.

ANTIMICROBIAL PROTECTION

Hager Companies' full line of US32D stainless steel door pulls, push bars, push plates, and pull plates are available with AgION antimicrobial protection.

Hager uses a powder coat process to apply the antimicrobial treated coating to guarantee durability and protection. Antimicrobial resistance on products is affected by moisture in the air. Silver ions interact with humidity and are released creating a cleaner surface. The suppression of bacteria, mold and fungi is as easy as adding antimicrobial treated coating to your Hager products.

Antimicrobial Vital Stats

- US32D stainless steel
- EPA registered
- NSF approved
- FDA listed for food contact
- Designate your product with: MV3 for Trim & Auxiliary





1

Modified Half Round Wrought Door Pull

- Certification: Meets ANSI A156.6 for J401 Pulls
- Base: 1/2" x 1" (13 mm x 25 mm)
- Projection: 2" (51 mm)
- Clearance: 1-1/2" (38 mm)
- Door Thickness: 1-3/4" (45 mm) - Standard
- Materials: Aluminum, brass, bronze, stainless steel
- Finishes: US3, US4, US10, US10B, US26, US26D, US28, US32, US32D
- Fasteners: Two (2) 1/4-20 thru-bolts with finish washers
- Handicap: 2-1/2" (64 mm) clearance available on special orders - add prefix "H" to number (i.e., H1E)
- Options:
 - May be combined with a plate to make a pull plate
 - Other centers on special order
- Notes:
 - For sizes or finishes not listed in this catalog, contact Hager Customer Service for availability
 - Not suitable for BTB mounting

CTC Length	1E	1G	1J	1L
Inches	6	8	10	12
Millimeters	152	203	254	305



2

Rectangular Wrought Door Pull

- Certification: Meets ANSI A156.6 for J401 Pulls
- Base: 3/8" x 1-1/4" (10 mm x 32 mm)
- Projection: 2" (51 mm)
- Clearance: 1-5/8" (41 mm)
- Door Thickness: 1-3/4" (45 mm) - Standard
- Materials: Aluminum, brass, bronze, stainless steel
- Finishes: US3, US4, US10, US10B, US26, US26D, US28, US32, US32D
- Fasteners: Two (2) 1/4-20 thru-bolts with finish washers
- Handicap: 2-1/2" (64 mm) clearance available on special orders - add prefix "H" to number (i.e., H2E)
- Options:
 - May be combined with a plate to make a pull plate
 - Other centers on special order
- Notes:
 - For sizes or finishes not listed in this catalog, contact Hager Customer Service for availability
 - Not suitable for BTB mounting

CTC Length	2E	2G	2J	2L
Inches	6	8	10	12
Millimeters	152	203	254	305



3

Round Wrought Door Pull

- Certification: Meets ANSI A156.6 for J401 Pulls
- Base Diameter: 3/4" (19 mm)
- Projection: 2-1/4" (57 mm)
- Clearance: 1-1/2" (38 mm)
- Door Thickness: 1-3/4" (45 mm) - Standard
- Materials: Aluminum, brass, bronze, stainless steel
- Finishes: US3, US4, US10, US10B, US26, US26D, US28, US32, US32D
- Fasteners: Two (2) 1/4-20 thru-bolts with finish washers
- Handicap: 2-1/2" (64 mm) clearance available on special orders - add prefix "H" to number (i.e., H3E)
- Notes:
 - For sizes or finishes not listed in this catalog, contact Hager Customer Service for availability
 - May be combined with a plate to make a pull plate
 - Other centers on special order
 - If ordered with tempered glass, specify glass thickness and hole size

CTC Length	3E	3G	3J	3L
Inches	6	8	10	12
Millimeters	152	203	254	305



TRIM & AUXILIARY

4

Round Wrought Door Pull

Certification: Meets ANSI A156.6 for J401 Pulls
 Base Diameter: 1" (25 mm)
 Projection: 2-3/4" (70 mm)
 Clearance: 1-3/4" (45 mm)
 Door Thickness: 1-3/4" (45 mm) - Standard
 Materials: Aluminum, brass, bronze, stainless steel
 Finishes: US3, US4, US10, US10B, US26, US26D, US28, US32, US32D
 Fasteners: Two (2) 1/4-20 thru-bolts with finish washers
 Handicap: 2-1/2" (64 mm) clearance available on special orders. Add prefix "H" to number (i.e., H4E)

- Notes:
- For sizes or finishes not listed in this catalog, contact Hager Customer Service for availability
 - May be combined with a plate to make a pull plate
 - Other centers on special order
 - If ordered with tempered glass, specify glass thickness and hole size

CTC Length	4G	4H	4J	4L
Inches	8	9	10	12
Millimeters	203	229	254	305

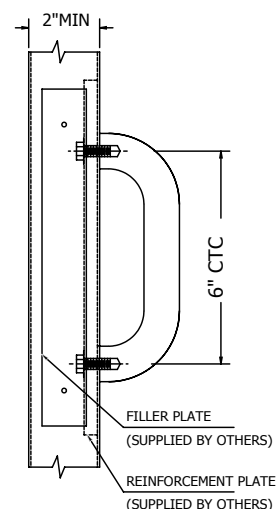


P4E

Security Pull

Certification: Meets ANSI A156.6 for J401 Pulls
 Base: 1" (25 mm) diameter
 Projection: 2-1/4" (57 mm)
 Clearance: 1-1/4" (32 mm)
 CTC Length: 6" (152 mm)
 Material: Stainless Steel
 Finish: US32D
 Fasteners: Two (2) 3/8-16 x 1-1/4" "NYLOC" hex head cap screws

- Notes:
- For metal doors
 - Requires reinforcing plate with an access plate and Torx screws for door edge



T4E

Security Pull

Certification: Meets ANSI A156.6 for J401 Pulls
 Base: 1" (25 mm) diameter
 Projection: 2-1/4" (57 mm)
 Clearance: 1-1/4" (32 mm)
 Door Thickness: 1-3/4" (45 mm) - Standard
 CTC Length: 6" (152 mm)
 Material: Stainless Steel
 Finish: US32D
 Fasteners: Two (2) 1/4-20 x 2-1/4" Security Torx thru-bolts





5D

Round Wrought Door Pull

- Certification: Meets ANSI A156.6 for J401 Pulls
- Base Diameter: 5/8" (16 mm)
- Projection: 2-1/8" (54 mm)
- Clearance: 1-1/2" (38 mm)
- CTC Length: 5-1/2" (140 mm)
- Door Thickness: 1-3/4" (45 mm) - Standard
- Materials: Aluminum, brass, bronze, stainless steel
- Finishes: US3, US4, US10, US10B, US26, US26D, US28, US32, US32D
- Fasteners: Two (2) 1/4-20 thru-bolts with finish washers
- Handicap: 2-1/2" (64 mm) clearance available on special orders. Add prefix "H" to number (i.e., H5D)
- Notes:
 - For sizes or finishes not listed in this catalog, contact Hager Customer Service for availability
 - May be combined with a plate to make a pull plate
 - If ordered with tempered glass, specify glass thickness and hole size
 - Not suitable for BTB mounting



5N

Cast Pull

- Certification: Meets ANSI A156.6 for J401 Pulls
- O/A Height: 6-1/8" (156 mm)
- Base: 5/8" x 1-3/16" (16 mm x 30 mm)
- Projection: 2" (51 mm)
- Clearance: 1-1/2" (38 mm)
- CTC Length: 5-1/2" (140 mm)
- Door Thickness: 1-3/4" (45 mm) - Standard
- Materials: Aluminum, brass, bronze, stainless steel
- Finishes: US3, US4, US10, US10B, US26, US26D, US28, US32D
- Fasteners: Two (2) 1/4-20 thru-bolts with finish washers
- Options: May be combined with a plate to make a pull plate
- Notes: Not suitable for BTB mounting



6N

Cast Pull

- Certification: Meets ANSI A156.6 for J401 Pulls
- O/A Height: 6-1/2" (165 mm)
- Base Diameter: 1" (25 mm)
- Projection: 1-7/8" (48 mm)
- Clearance: 1-3/8" (35 mm)
- CTC Length: 5-1/2" (140 mm)
- Door Thickness: 1-3/4" (45 mm) - Standard
- Materials: Aluminum, brass, bronze, stainless steel
- Finishes: US3, US4, US10, US10B, US26, US26D, US28, US32D
- Fasteners: Two (2) 1/4-20 thru-bolts with finish washers
- Options: May be combined with a plate to make a pull plate
- Notes: Not suitable for BTB mounting





TRIM & AUXILIARY



7N

Cast Pull

Certification:	Meets ANSI A156.6 for J401 Pulls
O/A Height:	7-1/2" (190 mm)
Base Diameter:	2" (51 mm)
Projection:	1-7/8" (48 mm)
Clearance:	1-3/8" (35 mm)
CTC Length:	5-1/2" (140 mm)
Door Thickness:	1-3/4" (45 mm) - Standard
Materials:	Aluminum, brass, bronze
Finishes:	US3, US4, US10, US10B, US26, US26D, US28
Fasteners:	Two (2) 1/4-20 thru-bolts with finish washers
Options:	May be combined with a plate to make a pull plate
Notes:	Not suitable for BTB mounting



8N

Cast Pull

Certification:	Meets ANSI A156.6 for J401 Pulls
O/A Height:	7-1/2" (190 mm)
Base Diameter:	2" (51 mm)
Projection:	1-7/8" (48 mm)
Clearance:	1-3/8" (35 mm)
CTC Length:	5-1/2" (140 mm)
Materials:	Aluminum, brass, bronze
Finishes:	US3, US4, US10, US10B, US26, US26D, US28
Fasteners:	Six (6) #8 x 1" OPHWS
Notes:	Not suitable for BTB mounting



P8N

Cast Pull

Certification:	Meets ANSI A156.6 for J401 Pulls
O/A Height:	8 - 3/4" (222 mm)
Base:	1-1/2" x 1-5/8" (38 mm x 41 mm)
Projection:	2-1/4" (57 mm)
Clearance:	1-9/16" (40 mm)
CTC Length:	7-3/4" (197 mm)
Materials:	Brass
Finishes:	US4, US26D
Fasteners:	Two (2) 3/8-16 x 3/4" FPHMS
Options:	Security Torx screws available
Notes:	Not suitable for BTB mounting





9

Oval Wrought Door Pull

Certification: Meets ANSI A156.6 for J401 Pulls
 Base: 1/2" x 3/4" (13 mm x 19 mm)
 Projection: 2" (51 mm)
 Clearance: 1-1/2" (38 mm)
 Door Thickness: 1-3/4" (45 mm) - Standard
 Materials: Brass, bronze, stainless steel
 Finishes: US3, US4, US10, US10B, US26, US26D, US32, US32D
 Fasteners: Two (2) 1/4-20 thru-bolts with finish washers
 Handicap: 2-1/2" (64 mm) clearance available on special orders. Add prefix "H" to number (i.e., H9E)

Options:

- May be combined with a plate to make a pull plate
- Other centers on special order

Notes:

- For sizes or finishes not listed in this catalog, contact Hager Customer Service for availability
- Not suitable for BTB mounting

CTC Length	9E	9G	9J	9L
Inches	6	8	10	12
Millimeters	152	203	254	305



10

Round Pull

Certification: Meets ANSI A156.6 for J401 Pulls
 Base Diameter: 1-1/4" (32 mm)
 Projection: 3" (76 mm)
 Clearance: 1-3/4" (45 mm)
 Door Thickness: 1-3/4" (45 mm) - Standard
 Materials: Aluminum, brass, bronze, stainless steel
 Finishes: US3, US4, US10, US10B, US26, US26D, US28, US32, US32D
 Fasteners: Two (2) 5/16-18 thru-bolts with finish washers
 Handicap: 2-1/2" (64 mm) clearance available on special orders. Add prefix "H" to number (i.e., H10L)

Options:

- May be combined with a plate to make a pull plate
- Other centers on special order
- If ordered with tempered glass, specify glass thickness and hole size

Notes:

For sizes or finishes not listed in this catalog, contact Hager Customer Service for availability

CTC Length	10L	10Q
Inches	12	18
Millimeters	305	457



11

Round Offset Pull

Certification: Meets ANSI A156.6 for J402 Pulls
 Base Diameter: 3/4" (19 mm)
 Projection: 2-1/2" (64 mm)
 Offset: 2-1/2" (64 mm); 90° Standard
 Clearance: 1-3/4" (45 mm)
 Door Thickness: 1-3/4" (45 mm) - Standard
 Materials: Aluminum, brass, bronze, stainless steel
 Finishes: US3, US4, US10, US10B, US26, US26D, US28, US32, US32D
 Fasteners: Two (2) 5/16-18 thru-bolts with finish washers
 Handicap: 2-1/2" (64 mm) clearance available on special orders. Add prefix "H" to number (i.e., H11E)

Options:

- For 45° offset, add prefix "X" to number (i.e., X11E)
- Other centers available on special orders
- If ordered with tempered glass, specify glass thickness and hole size

Notes:

For sizes or finishes not listed in this catalog, contact Hager Customer Service for availability

CTC Length	11E	11G	11J	11L
Inches	6	8	10	12
Millimeters	152	203	254	305



TRIM & AUXILIARY



12

Round Offset Pull

- Certification: Meets ANSI A156.6 for J402 Pulls
 Base Diameter: 1" (25 mm)
 Projection: 2-3/4" (70 mm)
 Offset: 3" (76 mm); 90° Standard
 Clearance: 1-3/4" (45 mm)
 Door Thickness: 1-3/4" (45 mm) - Standard
 Materials: Aluminum, brass, bronze, stainless steel
 Finishes: US3, US4, US10, US10B, US26, US26D, US28, US32, US32D
 Fasteners: Two (2) 5/16-18 thru-bolts with finish washers
 Handicap: 2-1/2" (64 mm) clearance available on special orders. Add prefix "H" to number (i.e., H12G)
- Options:
- For 45° offset, add prefix "X" to number (i.e., X12G)
 - Other centers available on special orders
 - If ordered with tempered glass, specify glass thickness and hole size
- Notes: For sizes or finishes not listed in this catalog, contact Hager Customer Service for availability

CTC Length	12G	12J	12L
Inches	8	10	12
Millimeters	203	254	305

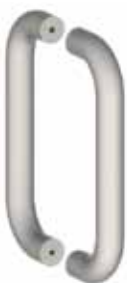


13

Round Wrought Door Push/Pull Set

- Certification: Meets ANSI A156.6 for J401 Pulls
 Base Diameter: 3/4" (19 mm)
 Projection: 2-1/4" (57 mm)
 Clearance: 1-1/2" (38 mm)
 Door Thickness: 1-3/4" (45 mm) - Standard
 Materials: Aluminum, brass, bronze, stainless steel
 Finishes: US3, US4, US10, US10B, US26, US26D, US28, US32, US32D
- Notes:
- Type 7 mounting - Standard
 - Consists of two (2) pulls back to back
 - For sizes or finishes not listed in this catalog, contact Hager Customer Service for availability

CTC Length	13E	13G	13J	13L
Inches	6	8	10	12
Millimeters	152	203	254	305



14

Round Wrought Door Push/Pull Set

- Certification: Meets ANSI A156.6 for J401 Pulls
 Base Diameter: 1" (25 mm)
 Projection: 2-3/4" (70 mm)
 Clearance: 1-3/4" (45 mm)
 Door Thickness: 1-3/4" (45 mm) - Standard
 Materials: Aluminum, brass, bronze, stainless steel
 Finishes: US3, US4, US10, US10B, US26, US26D, US28, US32, US32D
- Notes:
- Type 7 mounting - Standard
 - Consists of two (2) pulls back to back
 - For sizes or finishes not listed in this catalog, contact Hager Customer Service for availability

CTC Length	14G	14H	14J	14L
Inches	8	9	10	12
Millimeters	203	229	254	305





19N

Cast Pull

Certification: Meets ANSI A156.6 for J401 Pulls
 O/A Height: 9" (229 mm)
 Base Diameter: 1-1/2" (38 mm)
 Clearance: 1-11/16" (43 mm)
 Projection: 3-1/8" (79 mm)
 CTC Length: 6-3/16" (132 mm)
 Materials: Brass
 Finishes: US3, US10, US10B, US26, US26D
 Fasteners: Four (4) #8 x 1" OPH Tapping Screw
 Notes: Suitable for BTB mounting with sex nuts by special quotation



20

Round Push/Pull Set

Certification: Meets ANSI A156.6 for J401 Pulls
 Base Diameter: 1-1/4" (32 mm)
 Projection: 3" (76 mm)
 Clearance: 1-3/4" (45 mm)
 Door Thickness: 1-3/4" (45 mm) - Standard
 Materials: Brass, bronze, stainless steel
 Finishes: US3, US4, US10, US10B, US26, US26D, US28, US32, US32D
 Notes:

CTC Length	20L	20Q
Inches	12	18
Millimeters	305	457

- Type 7 mounting - Standard
- Consists of two (2) pulls back to back
- For sizes or finishes not listed in this catalog, contact Hager Customer Service for availability



20N

Cast Pull

Certification: Meets ANSI A156.6 for J401 Pulls
 O/A Height: 9" (229 mm)
 Base Diameter: 1-1/2" (38 mm)
 Clearance: 1-11/16" (43 mm)
 Projection: 3-1/8" (79 mm)
 CTC Length: 5-7/32" (132.5 mm)
 Door Thickness: 1-3/4" - Standard
 Material: Brass
 Finishes: US3, US10, US10B, US26, US26D
 Fasteners: Two (2) 1/4 - #20 x 2-3/16" Undercut FPHMS with finish washers



21

Round Offset Push/Pull Set

Certification: Meets ANSI A156.6 for J402 Pulls
 Base Diameter: 3/4" (19 mm)
 Projection: 2-1/2" (64 mm)
 Clearance: 1-3/4" (45 mm)
 Offset: 2-1/2" (64); 90° - Standard
 Door Thickness: 1-3/4" (45 mm) - Standard
 Materials: Aluminum, brass, bronze, stainless steel
 Finishes: US3, US4, US10, US10B, US26, US26D, US28, US32, US32D
 Notes:

CTC Length	21E	21G	21J	21L
Inches	6	8	10	12
Millimeters	152	203	254	305

- Type 7 mounting - Standard
- Consists of two (2) pulls back to back
- Available with 45 degree offset
- For sizes or finishes not listed in this catalog, contact Hager Customer Service for availability



TRIM & AUXILIARY

22

Round Offset Push/Pull Set

Certification: Meets ANSI A156.6 for J402 Pulls
 Base Diameter: 1" (25 mm)
 Projection: 2-3/4" (70 mm)
 Clearance: 1-3/4" (45 mm)
 Door Thickness: 1-3/4" (45 mm) - Standard
 Offset: 3" (76 mm); 90° standard
 Materials: Aluminum, brass, bronze, stainless steel
 Finishes: US3, US4, US10, US10B, US26, US26D, US28, US32, US32D
 Notes:

- Type 7 mounting - Standard
- Consists of two (2) pulls back to back
- Available with 45 degree offset
- For sizes or finishes not listed in this catalog, contact Hager Customer Service for availability

CTC Length	22G	22J	22L
Inches	8	10	12
Millimeters	203	254	305



23Q

Round Offset Pull

Certification: Meets ANSI A156.6 for J402 Offset Pulls
 Base Diameter: 1-1/4" (32 mm)
 Projection: 3" (76 mm)
 Clearance: 1-3/4" (45 mm)
 Offset: 3-3/4" (96 mm); 90° Standard
 Door Thickness: 1-3/4" (45 mm) - Standard
 CTC Length: 18" (457 mm)
 Materials: Aluminum, brass, bronze, stainless steel
 Finishes: US3, US4, US10, US10B, US26, US26D, US28, US32, US32D
 Fasteners: 5/16-18 thru bolts with finish washers
 Handicap: 2-1/2" (64 mm) clearance available on special orders. Add prefix "H" to number (i.e., H23Q)

- Options: For 45° offset, substitute "X" for first digit (i.e., X23Q)
- Notes:
- If ordered with tempered glass, specify glass thickness and hole size
 - For sizes or finishes not listed in this catalog, contact Hager Customer Service for availability



24Q

Round Offset Push/Pull Set

Certification: Meets ANSI A156.6 for J402 Offset Pulls
 Base Diameter: 1-1/4" (32 mm)
 Projection: 3" (76 mm)
 Clearance: 1-3/4" (45 mm)
 Offset: 3-3/4" (95 mm); 90° standard
 Door Thickness: 1-3/4" (45 mm) - Standard
 CTC Length: 18" (457 mm)
 Materials: Aluminum, brass, bronze, stainless steel
 Finishes: US3, US4, US10, US10B, US26, US26D, US28, US32, US32D
 Notes:

- Type 7 mounting - Standard
- Consists of two (2) pulls back to back
- Available with 45 degree offset
- For sizes or finishes not listed in this catalog, contact Hager Customer Service for availability





910P | 910B

Offset Mounting Vertical Pull

- Pull Diameter: 1-1/4" (32 mm)
- O/A Length: 36" (914 mm), 72" (1829 mm)
- CTC Lengths: 20" (508 mm), 56" (1422 mm)
- Clearance: 2" (51 mm)
- Projection: 3-1/4" (82 mm)
- Materials: Aluminum, brass, bronze, stainless steel
- Finishes: US3, US4, US10, US10B, US15A, US26, US26D, US28, US32D
- Fasteners: Two (2) 3/8-16 FPHMS with finish washers
- Notes:
 - 910B is same as 910P with fasteners for BTB mounting
 - For sizes or finishes not listed in this catalog, contact Hager Customer Service for availability



915P | 915B

Straight Mounting Vertical Pull

- Pull Diameter: 1-1/4" (32 mm)
- O/A Length: 36" (914 mm), 72" (1829 mm)
- CTC Lengths: 20" (508 mm), 56" (1422 mm)
- Clearance: 2" (51 mm)
- Projection: 3-1/4" (82 mm)
- Materials: Aluminum, brass, bronze, stainless steel
- Finishes: US3, US4, US10, US10B, US15A, US26, US26D, US28, US32D
- Fasteners: Two (2) 3/8-16 FPHMS w/ finish washers
- Notes:
 - 915B is same as 915P with fasteners for BTB mounting
 - For sizes or finishes not listed in this catalog, contact Hager Customer Service for availability



920P | 920B

C-Shaped Pull

- Base Diameter: 1" (25 mm)
- Clearance: 1-3/4" (45 mm)
- Projection: 2-1/4" (57 mm)
- CTC Length: 8-1/2" (217 mm)
- Materials: Aluminum, brass, bronze, stainless steel
- Finishes: US3, US4, US10, US10B, US15A, US26, US26D, US28, US32D
- Fasteners: Two (2) 3/8-16 FPHMS with finish washers
- Notes:
 - 920B is pair of 920P with fasteners for BTB mounting
 - For sizes or finishes not listed in this catalog, contact Hager Customer Service for availability



921P | 921B

C-Shaped Pull

- Clearance: 1-1/2" (38 mm)
- Projection: 2-1/8" (54 mm)
- CTC Length: 17-1/2" (446 mm)
- Materials: Brass, bronze, stainless steel
- Finishes: US3, US4, US10, US10B, US15A, US26, US26D, US32D
- Fasteners: Two (2) 3/8-16 FPHMS with finish washers
- Notes:
 - 921B is pair of 921P with fasteners for BTB mounting
 - For sizes or finishes not listed in this catalog, contact Hager Customer Service for availability



TRIM & AUXILIARY



922P | 922B

C-Shaped Pull - Continuous

- Pull Diameter: 1" (25 mm)
Projection: 2-1/2" (64 mm)
CTC Lengths: 10" (254 mm), 12" (305 mm)
Clearance: 1-1/2" (38 mm)
Materials: Aluminum, brass, bronze, stainless steel
Finishes: US3, US4, US10, US10B, US15A, US26, US26D, US32D
Fasteners: Two (2) 3/8-16 FPHMS with finish washers
Notes:
 - 922B is pair of 922P with fasteners for BTB mounting
 - For sizes or finishes not listed in this catalog, contact Hager Customer Service for availability



923P | 923B

C-Shaped Pull - Flanged

- Pull Diameter: 1" (25 mm)
Projection: 2-3/4" (70 mm)
CTC Lengths: 10" (254 mm), 12" (305 mm)
Clearance: 1-3/4" (44 mm)
Base Diameter: 3/4" (19 mm)
Materials: Aluminum, brass, bronze, stainless steel
Finishes: US3, US4, US10, US10B, US15A, US26, US26D, US32D
Fasteners: Two (2) 3/8-16 FPHMS with finish washers
Notes:
 - 923B is pair of 923P with fasteners for BTB mounting
 - For sizes or finishes not listed in this catalog, contact Hager Customer Service for availability



924P | 924B

C-Shaped Pull

- Projection: 2-1/2" (64 mm)
CTC Length: 14" (356 mm)
Clearance: 1-1/2" (38 mm)
Materials: Brass, bronze, stainless steel
Finishes: US3, US4, US10, US10B, US15A, US26, US26D, US32D
Fasteners: Two (2) 3/8-16 FPHMS with finish washers
Notes:
 - 924B is pair of 924P with fasteners for BTB mounting
 - For sizes or finishes not listed in this catalog, contact Hager Customer Service for availability



925P | 925B

C-Shaped Pull

- Pull Diameter: 1-1/4" (32 mm)
CTC Lengths: 6-1/2" (165 mm), 8-1/2" (217 mm), 12-1/2" (318 mm)
Materials: Aluminum, brass, bronze, stainless steel
Finishes: US3, US4, US10B, US15A, US26, US26D, US32D
Fasteners: Two (2) 3/8-16 FPHMS with finish washers
Notes:
 - 925B is pair of 925P with fasteners for BTB mounting
 - For sizes or finishes not listed in this catalog, contact Hager Customer Service for availability





926P | 926B

Curved Pull

- Base Diameter: 1-1/4" (32 mm)
- Projection: 3" (76 mm)
- Clearance: 1-13/16" (46 mm)
- Pull Diameter: 1-3/16" (30 mm)
- CTC Length: 12" (305 mm)
- Materials: Brass, bronze
- Finishes: US3, US4, US10, US10B
- Fasteners: Two (2) 3/8-16 FPHMS with finish washers
- Notes:
 - 926B is pair of 926P with fasteners for BTB mounting
 - For sizes or finishes not listed in this catalog, contact Hager Customer Service for availability



930P | 930B

90° Pull

- Projection: 3" (76 mm)
- CTC Lengths: 14-5/32" - 16-31/32" (360 mm - 431 mm)
- Materials: Aluminum, brass, bronze, stainless steel
- Finishes: US3, US4, US10B, US15A, US26, US26D, US28, US32D
- Fasteners: Two (2) 3/8-16 FPHMS with finish washers
- Notes:
 - 930B is pair of 930P with fasteners for BTB mounting
 - For sizes or finishes not listed in this catalog, contact Hager Customer Service for availability



932P | 932B

S-Shaped Pull

- Projection: 3" (76 mm)
- Clearance: 2" (51 mm)
- Pull Diameter: 1" (25 mm)
- Fasteners: Two (2) 3/8-16 FPHMS w/ finish washers
- CTC Length: 30" (762 mm)
- Materials: Aluminum, brass, bronze, stainless steel
- Finishes: US3, US4, US10B, US15A, US26, US26D, US28, US32D
- Fasteners: Two (2) 3/8-16 FPHMS with finish washers
- Notes:
 - 932B is pair of 932P with fasteners for BTB mounting
 - Specify handing when ordering
 - For sizes or finishes not listed in this catalog, contact Hager Customer Service for availability



TRIM & AUXILIARY



933P | 933B

Colonial Style Pull

Projection: 2-3/16" (56 mm)
Clearance: 1-3/16" (30 mm)
Pull Diameter: 1" (25 mm)
Base Diameter: 15/16" (24 mm)
CTC Length: 6" (152 mm)
Materials: Aluminum, brass, bronze, stainless steel
Finishes: US3, US4, US10B, US26
Fasteners: Two (2) 3/8-16 FPHMS with finish washers
Notes: 933B is pair of 933P with fasteners for BTB mounting



934P | 934B

Offset Pull

Projection: 3" (76 mm)
Clearance: 1-5/8" (41 mm)
Pull Diameter: 1" (25 mm)
Base Diameter: 3/4" (19 mm)
CTC Lengths: 12" (305 mm), 16" (406 mm), 18" (457 mm)
Materials: Aluminum, brass, bronze, stainless steel
Finishes: US3, US4, US10B, US15A, US26, US26D, US28, US32D
Fasteners: Two (2) 3/8-16 FPHMS with finish washers
Notes: 934B is pair of 934P with fasteners for BTB mounting



960P | 960B

Square Tip Pull

O/A Height: 16" (406 mm)
Base Diameter: 1-1/4" (32 mm)
Pull Diameter: 1" (25 mm)
Clearance: 1-3/4" (45 mm)
Projection: 3-1/4" (83 mm)
CTC Length: 12" (305 mm)
Materials: Brass, bronze
Finishes: US3, US4, US10B, US15A, US26, US26D
Fasteners: Two (2) 3/8-16 FPHMS w/ finish washers
Notes:

- 960B is pair of 960P with fasteners for BTB mounting
- For sizes or finishes not listed in this catalog, contact Hager Customer Service for availability





961P | 961B

Steeple Tip Pull

O/A Height: 16-5/16" (414 mm)
 Base Diameter: 2" (51 mm)
 Pull Diameter: 1" (25 mm)
 Clearance: 1-3/4" (45 mm)
 Projection: 3" (76 mm)
 CTC Length: 12" (305 mm)
 Materials: Brass, bronze
 Finishes: US3, US4, US10B, US15A, US26, US26D
 Fasteners: Two (2) 3/8-16 FPHMS with finish washers
 Notes:

- 961B is pair of 961P with fasteners for BTB mounting
- For sizes or finishes not listed in this catalog, contact Hager Customer Service for availability



962P

Acorn Tip Pull

O/A Height: 16-5/16" (414 mm)
 Base Diameter: 2" (51 mm)
 Pull Diameter: 1" (25 mm)
 Projection: 3" (76 mm)
 Clearance: 1-7/8" (48 mm)
 CTC Length: 12" (305 mm)
 Materials: Brass, bronze
 Finishes: US3, US4, US10B, US15A, US26, US26D
 Fasteners: Two (2) 3/8-16 FPHMS with finish washers
 Notes: For sizes or finishes not listed in this catalog, contact Hager Customer Service for availability



963P

Acorn Pull - Offset

O/A Height: 16-5/16" (414 mm)
 Pull Diameter: 1" (25 mm)
 Projection: 2-3/4" (70 mm)
 CTC Lengths: 12" (304 mm), 16" (406 mm), 18" (457 mm), 24" (610 mm), 30" (762 mm)
 Materials: Cast brass, bronze
 Finishes: US3, US4, US10B, US15A, US26, US26D
 Fasteners: Two (2) 3/8-16 FPHMS with finish washers
 Notes: For sizes or finishes not listed in this catalog, contact Hager Customer Service for availability



967P

Curved Pull

O/A Height: 20-1/2" (520 mm)
 Clearance: 3-9/16" (90 mm)
 Projection: 5-9/16" (141 mm)
 CTC Length: 16" (406 mm)
 Materials: Brass, bronze
 Finishes: US3, US4, US10B, US15A, US26, US26D
 Fasteners: Two (2) 3/8-16 FPHMS with finish washers
 Notes: For sizes or finishes not listed in this catalog, contact Hager Customer Service for availability





TRIM & AUXILIARY



970P

Custom Push/Pull Set

- Base Diameter: 1" (25 mm)
 Pull Projection: 3" (76 mm)
 Pull Clearance: 2" (51 mm)
 CTC Length: 13-1/4" (337 mm)
 Push Projection: 2-3/4" (70 mm)
 Push Clearance: 1-3/4" (45 mm)
 CTC Length: 34" (864 mm) or to suit door dimension
 Materials: Brass, bronze, stainless steel
 Finishes: US3, US4, US10, US10B, US15A, US26, US26D, US32D
 Fasteners: Type 3 mounting, concealed cone with bolt and set screw
 Notes:
 - Pull or push bar can be ordered separately by quotation only
 - Push bar radius can be custom made so the radius points in the downward direction
 - For sizes or finishes not listed in this catalog, contact Hager Customer Service for availability



974P | 974B

Door Pull

- Pull Diameter: 1" (25 mm)
 Base Diameter: 2" (51 mm)
 Projection: 2-1/2" (64 mm)
 CTC Length: 12" (304 mm), 18" (457 mm), 24" (610 mm), 30" (762 mm), 36" (914 mm), 48" (1219 mm)
 Pull Material: Brass, bronze, stainless steel
 Base Material: Black anodized aluminum
 Finishes: US3, US4, US10B, US26, US26D, US32D
 Fasteners: Two (2) 3/8-16 FPHMS with finish washers
 Notes:
 - 974B is pair of 974P with fasteners for BTB mounting
 - For sizes or finishes not listed in this catalog, contact Hager Customer Service for availability



975P | 975B

Vertical Pull

- Projection: 1-3/4" (44 mm)
 O/A Length: 36" (914 mm), 72" (1829 mm)
 CTC Length: 20" (508 mm), 56" (1422 mm)
 Pull Diameter: 1" (25 mm)
 Materials: Brass, bronze, stainless steel
 Finishes: US3, US4, US10, US10B, US15A, US26, US26D, US32D
 Fasteners: Two (2) 3/8-16 FPHMS with finish washers
 Notes:
 - 975B is pair of 975P with fasteners for BTB mounting
 - For sizes or finishes not listed in this catalog, contact Hager Customer Service for availability





976P | 976B

Door Pull - Offset

- O/A Height: 29-1/2" (750 mm)
- Base Diameter: 1-1/4" (32 mm)
- Pull Diameter: 1-1/4" (32 mm)
- Projection: 5-3/8" (137 mm)
- Clearance: 4-1/8" (105 mm)
- Offset: 1-3/4" (45 mm)
- CTC Length: 19-13/16" (503 mm)
- Materials: Stainless steel
- Finish: US32, US32D
- Fasteners: Two (2) 3/8-16 FPHMS with finish washers
- Notes:
 - 976B is pair of 976P with fasteners for BTB mounting
 - For sizes or finishes not listed in this catalog, contact Hager Customer Service for availability



980P | 980B

Segment Shape - Straight

- CTC Length: 9" (229 mm), 12" (305 mm), 18" (457 mm), 24" (610 mm)
- Materials: Brass, bronze, stainless steel
- Finishes: US3, US4, US10B, US15A, US26, US26D, US32D
- Fasteners: Two (2) 3/8-16 FPHMS with finish washers
- Notes:
 - 980B is pair of 980P with fasteners for BTB mounting
 - For sizes or finishes not listed in this catalog, contact Hager Customer Service for availability



981P | 981B

Segment Shape - Offset

- Projection: 2-3/8" (60 mm)
- CTC Length: 9" (229 mm), 12" (305 mm), 18" (457 mm), 24" (610 mm)
- Materials: Brass, bronze, stainless steel
- Finishes: US3, US4, US10B, US15A, US26, US26D, US32D
- Fasteners: Two (2) 3/8-16 FPHMS with finish washers
- Notes:
 - 981B is pair of 981P with fasteners for BTB mounting
 - For sizes or finishes not listed in this catalog, contact Hager Customer Service for availability



982P | 982B

Straight Pull

- Base Diameter: 1-5/16" (33 mm)
- Projection: 3-1/8" (79 mm)
- Clearance: 1-13/16" (46 mm)
- CTC Length: 20" (508 mm)
- Materials: Brass, bronze, stainless steel
- Finishes: US3, US4, US10B, US15A, US26, US26D, US32D
- Fasteners: Two (2) 3/8-16 FPHMS with finish washers
- Notes:
 - 982B is pair of 982P with fasteners for BTB mounting
 - For sizes or finishes not listed in this catalog, contact Hager Customer Service for availability





TRIM & AUXILIARY



983P | 983B

Curved Pull

O/A Height:	21-1/4" (540 mm)
Base Diameter:	1-1/4" (32 mm)
Projection:	3-1/8" (79 mm)
Clearance:	1-7/8" (48 mm)
CTC Length:	20" (508 mm)
Materials:	Brass, bronze, stainless steel
Finishes:	US3, US4, US10B, US15A, US26, US26D, US32D
Fasteners:	Two (2) 3/8-16 FPHMS with finish washers
Notes:	<ul style="list-style-type: none"> • 983B is pair of 983P with fasteners for BTB mounting • Specify handing when ordering • For sizes or finishes not listed in this catalog, contact Hager Customer Service for availability



984P | 984B

Curved Pull

Clearance:	1-7/8" (47 mm)
Projection:	3" (76 mm)
CTC Lengths:	12" (305 mm), 20" (508 mm)
Materials:	Brass, bronze, stainless steel
Finishes:	US3, US4, US10B, US15A, US26, US32, US32D
Fasteners:	Two (2) 3/8-16 FPHMS with finish washers
Notes:	<ul style="list-style-type: none"> • 984B is pair of 984P with fasteners for BTB mounting • For sizes or finishes not listed in this catalog, contact Hager Customer Service for availability



985P | 985B

Curved Pull

O/A Height:	14" (356 mm)
Projection:	3" (76 mm)
Clearance:	1-9/16" (40 mm)
CTC Length:	12" (305 mm)
Materials:	Brass, bronze, stainless steel
Finishes:	US3, US4, US10B, US15A, US26, US26D, US32D
Fasteners:	Two (2) 3/8-16 FPHMS with finish washers
Notes:	<ul style="list-style-type: none"> • 985B is pair of 985P with fasteners for BTB mounting • For sizes or finishes not listed in this catalog, contact Hager Customer Service for availability



986P | 986B

Curved Pull

O/A Height:	22" (559 mm)
Pull Diameter:	1-1/4" (32 mm)
Base Diameter:	2" (51 mm)
Projection:	3-7/8" (99 mm)
Clearance:	2-5/8" (67 mm)
CTC Length:	20" (508 mm)
Materials:	Brass, bronze, stainless steel
Finishes:	US3, US4, US10B, US15A, US26, US26D, US32
Fasteners:	Two (2) 3/8-16 FPHMS with finish washers
Notes:	<ul style="list-style-type: none"> • 986B is pair of 986P with fasteners for BTB mounting • For sizes or finishes not listed in this catalog, contact Hager Customer Service for availability





987P | 987B
Double Curved Pull

Base Diameter: 1-1/4" (32 mm)
 Clearance: 2" (51 mm)
 Projection: 3" (76 mm)
 CTC Length: 20" (508 mm)
 Materials: Brass, bronze, stainless steel
 Finishes: US3, US4, US10B, US15A, US26, US26D, US32D
 Fasteners: Two (2) 3/8-16 FPHMS with finish washers
 Notes:

- 987B is pair of 987P with fasteners for BTB mounting
- For sizes or finishes not listed in this catalog, contact Hager Customer Service for availability



988P | 988B
Offset Curved Pull

Projection: 3" (76 mm)
 CTC Length: 24" (610 mm)
 Materials: Brass, bronze, stainless steel
 Finishes: US3, US26, US32D
 Fasteners: Two (2) 3/8-16 FPHMS with finish washers
 Notes:

- 988B is pair of 988P with fasteners for BTB mounting
- For sizes or finishes not listed in this catalog, contact Hager Customer Service for availability



990P | 990B
18° Pull

Pull Diameter: 1" (25 mm)
 Projection: 2-3/4" (70 mm)
 Clearance: 1-3/4" (45 mm)
 CTC Length: 24" (610 mm)
 Materials: Brass, bronze, stainless steel
 Finishes: US3, US4, US10B, US15A, US26, US26D, US32D
 Fasteners: Two (2) 3/8-16 FPHMS with finish washers
 Notes:

- 990B is pair of 990P with fasteners for BTB mounting
- Specify handing when ordering
- For sizes or finishes not listed in this catalog, contact Hager Customer Service for availability



TRIM & AUXILIARY



15C

Flush Cup Pull

Certification: Meets ANSI A156.6 for J403 Pulls
Description: Cup welded to face plate
Face: 3-1/2" x 5" (89 mm x 127 mm)
Projection: 1/8" (3.2 mm)
Opening: 1-3/4" x 3-1/16" (44 mm x 78 mm)
Cup Clearance: 3/4" (19 mm)
Materials: Stainless steel
Finishes: US32D
Fasteners: Four (4) #6 x 5/8" OPHWS



15N

Flush Cup Pull

Certification: Meets ANSI A156.6 for J403 Pulls
Face: 3-1/2" x 5" (89 mm x 127 mm)
Projection: 1/8" (3.2 mm)
Opening: 1-3/4" x 3-1/16" (44 mm x 78 mm)
Cup Clearance: 3/4" (19 mm)
Materials: Aluminum, brass, bronze, stainless steel
Finishes: US3, US4, US10, US10B, US26, US26D, US28, US32D
Fasteners: Four (4) #6 x 5/8" OPHWS



15P

Flush Cup Pull

Certification: Meets ANSI A156.6 for J403 Pulls
Description: Cup welded to face plate and welded studs for security torx thru-bolt mounting
Face: 3-1/2" x 5" (89 mm x 127 mm)
Projection: 3/16" (5 mm)
Opening: 1-3/4" x 3-1/16" (44 mm x 78 mm)
Cup Clearance: 3/4" (19 mm)
Materials: Stainless steel
Finishes: US32D
Fasteners: Two (2) 6-32 x 1-1/2" FPHMS (Security Torx)
Notes: For use on 1-3/4" (44 mm) doors



15S

Flush Cup Pull

Certification: Meets ANSI A156.6 for J403 Pulls
Description: Concealed mounting by screws within the recessed cup (similar to 16N or 17N)
Face: 3-1/2" x 5" (89 mm x 127 mm)
Projection: 1/8" (3.2 mm)
Opening: 1-3/4" x 3-1/16" (44 mm x 78 mm)
Cup Clearance: 3/4" (19 mm)
Materials: Aluminum, brass, bronze, stainless steel
Finishes: US3, US4, US10, US10B, US26, US26D, US28, US32D
Fasteners: Two (2) #6 x 5/8" PPHWS
Notes: Fasteners concealed in cup





16N

Flush Cup Pull

Certification: Meets ANSI A156.6 for J403 Pulls
 Face: 1-15/16" x 3" (49 mm x 76 mm)
 Projection: 1/16" (1.5 mm)
 Opening: 27/32" x 2-3/8" (22 mm x 60 mm)
 Cup Clearance: 5/8" (16 mm)
 Fasteners: Two (2) #8 x 3/4" OPHWS
 Materials: Brass
 Finishes: US3, US4, US10, US10B, US26, US26D
 Notes: Fasteners concealed in cup



16R

Finger Pull Plate

Certification: Meets ANSI A156.6 for combination J301 Pull Plate and J403 Pulls
 Face: 4" x 16" (102 mm x 406 mm)
 Projection: .050" (1.3 mm)
 Opening: 1-3/4" x 3-1/16" (44 x 78 mm)
 Cup Clearance: 13/16" (21 mm)
 Fasteners: Ten (10) #6 x 5/8" OPHWS
 Materials: Aluminum, brass, bronze, stainless steel
 Finishes: US3, US4, US10, US10B, US26, US26D, US28, US32, US32D



17N

Flush Cup Pull

Certification: Meets ANSI A156.6 for J403 Pulls
 Face: 2-1/2" x 3-31/32" (64 mm x 101 mm)
 Projection: 3/32" (2.4 mm)
 Opening: 1-11/32" x 3-13/32" (34 mm x 87 mm)
 Cup Clearance: 5/8" (16 mm)
 Materials: Brass
 Finishes: US3, US4, US10, US10B, US26, US26D
 Fasteners: Two (2) #8 x 13/16" OPHWS
 Notes: Fasteners concealed in cup



25B

Security Flush Pull Set

Certification: Meets ANSI A156.6 for J403 Pulls
 Face: 3-1/2" x 5" (89 mm x 127 mm)
 Opening: 1-3/4" x 3-1/16" (45 mm x 78 mm)
 Projection: 3/16" (5 mm)
 Cup Clearance: 3/4" (19 mm)
 Door Thickness: 1-3/4" (45 mm) - Standard
 Materials: Stainless steel
 Finishes: US32D
 Fasteners: Two (2) 6-32 x 1-1/2" FPHMS (Security Torx)
 Notes: Security pull thru-bolted to a 15P pull



TRIM & AUXILIARY



25C

Flush Pull Set

Certification: Meets ANSI A156.6 for J403 Pulls
Face: 3-1/2" x 5" (89 mm x 127 mm)
Opening: 1-3/4" x 3-1/16" (45 mm x 78 mm)
Projection: 1/8" (3 mm)
Cup Clearance: 3/4" (19 mm)
Door Thickness: 1-3/4" (45 mm) - Standard
Fasteners: Two (2) 6-32 OPHMS sex nuts and bolts
Materials: Stainless steel
Finishes: US32D
Notes: Consists of two (2) 15C pulls mounted BTB



25N

Flush Pull Set

Certification: Meets ANSI A156.6 for J403 Pulls
Face: 3-1/2" x 5" (89 mm x 127 mm)
Opening: 1-3/4" x 3-1/16" (45 mm x 78 mm)
Projection: 1/8" (3 mm)
Cup clearance: 3/4" (19 mm)
Door Thickness: 1-3/4" (45 mm) - Standard
Fasteners: Two (2) 6-32 OPHMS sex nuts and bolts
Materials: Aluminum, brass, bronze, stainless steel
Finishes: US3, US4, US10, US10B, US26, US26D, US28, US32D
Notes: Consists of two (2) 15N pulls mounted BTB



25P

Security Finger Push/Pull Plate Set

Certification: Meets ANSI A156.6 for combination J301 Push Plate and J403 Flush Pull
Face: 4" x 16" (102 mm x 406 mm)
Projection: 1/8" (3.2 mm)
Opening: 1-3/4" x 3-1/16" (44 mm x 78 mm)
Cup Clearance: 13/16" (21 mm)
Fasteners: Six (6) 8-32 x 3/4" FPHMS (Security Torx) with sex nuts and bolts
Materials: Stainless Steel
Finishes: US32D
Notes: Consists of a 15 pull cup welded to a 100T push plate (Mounted in BTB fashion)



26N

Security Finger Pull

Certification: Meets ANSI A156.6 for J403 Pulls
Face: 4" x 5" (102 mm x 127 mm)
Projection: 1/8" (3.2 mm)
Opening: 1-5/8" x 3" (41 mm x 76 mm)
Cup Clearance: 13/16" (21 mm)
Fasteners: Four (4) 1/4-20 x 3/4" Undercut FPHMS (Security Torx)
Materials: Brass, stainless steel
Finishes: US4, US26D, US32D
Notes: Cup welded to face





27N

Flush Cup Pull

Certification: Meets ANSI A156.6 for J403 Pulls
 Face: 5" x 5" (127 mm x 127 mm)
 Projection: 3/8" (9.5 mm)
 Opening: 3" x 3-1/2" (76 mm x 89 mm)
 Cup Clearance: 7/8" (22 mm)
 Materials: Stainless steel
 Finishes: US32D
 Fasteners: Four (4) 10-24 FPHMS (Security Torx) sex nuts and bolts
 Notes:

- ADA Compliant
- Not available for BTB mounting



27P

Flush Cup Pull

Certification: Meets ANSI A156.6 for J403 Pulls
 Face: 5" x 5" (127 mm x 127 mm)
 Projection: 3/8" (9.5 mm)
 Opening: 3" x 3-1/2" (76 mm x 89 mm)
 Cup Clearance: 7/8" (22 mm)
 Materials: Stainless steel
 Finishes: US32D
 Fasteners: Four (4) 1/4-20 x 3/4" Undercut FPHMS (Security Torx)
 Notes:

- ADA Compliant
- Not available for BTB mounting





TRIM & AUXILIARY



30, 40, 50 Series

Pull Plate

Gauge: 0.050" (1.3 mm)
 Certification: Meets ANSI A156.6
 for J405 Pull Plate



80, 90, 100 Series

Pull Plate

Gauge: 0.125" (3.2 mm)
 Certification: Meets ANSI A156.6
 for J407 Pull Plate



A30, A40, A50 Series

Pull Plate

Gauge: 0.062" (1.6 mm)
 Certification: Meets ANSI A156.6
 for J405 Pull Plate

Materials: Aluminum, brass, bronze, stainless steel
 Standard Sizes: 3" x 12" (76 mm x 305 mm), 3-1/2" x 15" (89 mm x 381 mm), 4" x 16" (102 mm x 406 mm),
 6" x 16" (152 mm x 406 mm)*, 8" x 16" (203 mm x 406 mm)* - *(size not available for 50 and A50 Series)
 Fasteners: Six (6) #6 x 5/8 OPH tapping screws
 Finishes: US3, US4, US10, US10B, US26, US26D, US28, US32, US32D
 Notes: For sizes or finishes not listed in this catalog, contact Hager Customer Service for availability

Pull Plate Chart

Pull	30, 40, 50 Series			A30, A40, A50 Series			80, 90, 100 Series		
	Square Corner	Radius Corner	Rounded Corner	Square Corner	Radius Corner	Rounded Corner	Square Corner	Radius Corner	Rounded Bevel
	Pull Plate Part Number								
1E	31E	41E	51E	A31E	A41E	A51E	81E	91E	101E
1G	31G	41G	51G	A31G	A41G	A51G	81G	91G	101G
1J	31J	41J	51J	A31J	A41J	A51J	81J	91J	101J
1L	31L	41L	51L	A31L	A41L	A51L	81L	91L	101L
2E	32E	42E	52E	A32E	A42E	A52E	82E	92E	102E
2G	32G	42G	52G	A32G	A42G	A52G	82G	92G	102G
2J	32J	42J	52J	A32J	A42J	A52J	82J	92J	102J
2L	32L	42L	52L	A32L	A42L	A52L	82L	92L	102L
3E	33E	43E	53E	A33E	A43E	A53E	83E	93E	103E
3G	33G	43G	53G	A33G	A43G	A53G	83G	93G	103G
3J	33J	43J	53J	A33J	A43J	A53J	83J	93J	103J
3L	33L	43L	53L	A33L	A43L	A53L	83L	93L	103L
4G	34G	44G	54G	A34G	A44G	A54G	84G	94G	104G
4J	34J	44J	54J	A34J	A44J	A54J	84J	94J	104J
4L	34L	44L	54L	A34L	A44L	A54L	84L	94L	104L
5D	35D	45D	55D	A35D	A45D	A55D	85D	95D	105D
5N	35N	45N	55N	A35N	A45N	A55N	85N	95N	105N
6N	36N	46N	56N	A36N	A46N	A56N	86N	96N	106N
9E	39E	49E	59E	A39E	A49E	A59E	89E	99E	109E
9G	39G	49G	59G	A39G	A49G	A59G	89G	99G	109G
9J	39J	49J	59J	A39J	A49J	A59J	89J	99J	109J
9L	39L	49L	59L	A39L	A49L	A59L	89L	99L	109L





313L

Antivandal Pull with Latchguard

Certification: Meets ANSI A156.6 for J401 Pull and ANSI A156.6 for J407 Pull Plate
 Size: 7-13/32" x 11" (188 mm x 280 mm)
 Height: 11" (280 mm)
 Projection: 1-7/8" (48 mm)
 Clearance: 1-5/8" (41 mm)
 Door Thickness: 1-3/4" – 2" (45 mm - 51 mm)
 Materials: 11 GA Stainless Steel
 Finishes: US32D
 Fasteners: 1/4-20 FPHMS with finish washers - Standard
 Options:

- Cylinder cutout available [1-1/4" (32 mm) diameter standard for exit device use and 1-1/2" (38 mm) diameter standard for mortise lock use]
- Plastisol grip available

Notes:

- For use with most mortise locks on in-swinging and out-swinging doors
- For use with many exit devices (thru bolts directly to device)
- Cylinders must be ordered separately
- When mounting pull to a Hager exit device, cylinder collar (2-649-0137) must be purchased to ensure proper installation (see instructions for more detail)
- When mounting pull to a Hager exit device, a 7/16" (11 mm) tall cylinder collar must be purchased when using a 1-1/4" - 1-3/8" (32 mm - 35 mm) long rim cylinder (see instructions for more detail)



313S

Antivandal Pull

Certification: Meets ANSI A156.6 for J401 Pull and ANSI A156.6 for J407 Pull Plate
 Size: 6-11/32" x 11" (161 mm x 280 mm)
 Height: 11" (280 mm)
 Projection: 1-7/8" (48 mm)
 Clearance: 1-5/8" (41 mm)
 Door Thickness: 1-3/4" – 2" (45 mm - 51 mm)
 Materials: 11 GA Stainless Steel
 Finishes: US32D
 Fasteners: 1/4-20 FPHMS with finish washers - Standard
 Options:

- Cylinder cutout available [1-1/4" (32 mm) diameter standard for exit device use and 1-1/2" (38 mm) diameter standard for mortise lock use]
- Plastisol grip available

Notes:

- For use with most mortise locks on in-swinging and out-swinging doors
- For use with many exit devices (thru bolts directly to device)
- Cylinders must be ordered separately
- When mounting pull to a Hager exit device, cylinder collar (2-649-0137) must be purchased to ensure proper installation (see instructions for more detail)
- When mounting pull to a Hager exit device, a 7/16" (11 mm) tall cylinder collar must be purchased when using a 1-1/4" - 1-3/8" (32 mm - 35 mm) long rim cylinder (see instructions for more detail)





TRIM & AUXILIARY

30S | A30S

Square Corner - Beveled Push Plate

Certification: Meets ANSI A156.6 for J301 Push Plate
 Gauge: • 30S - 0.050" (1.3 mm)
 • A30S - 0.062" (1.6 mm)
 Materials: Aluminum, brass, bronze, stainless steel
 Finishes: US3, US4, US10, US10B, US26, US26D, US28, US32, US32D
 Fasteners: Six (6) #6 x 5/8" OPH tapping screws
 Options: May be ordered cut for cylinder (CFC) or engraved "PUSH"
 Notes: For sizes or finishes not listed in this catalog, contact Hager Customer Service for availability

Available in Sizes					
Inches	3 x 12	3-1/2 x 15	4 x 16	6 x 16	8 x 16
Millimeters	76 x 305	89 x 38	102 x 406	152 x 406	203 x 406

40R | A40R

Radius Corner - Non-Beveled Push Plate

Certification: Meets ANSI A156.6 for J301 Push Plate
 Gauge: • 40R - 0.050" (1.3 mm)
 • A40R - 0.062" (1.6 mm)
 Materials: Aluminum, brass, bronze, stainless steel
 Finishes: US3, US4, US10, US10B, US26, US26D, US28, US32, US32D
 Fasteners: Six (6) #6 x 5/8" OPH tapping screws
 Options: May be ordered cut for cylinder (CFC) or engraved "PUSH"
 Notes: For sizes or finishes not listed in this catalog, contact Hager Customer Service for availability

Available in Sizes					
Inches	3 x 12	3-1/2 x 15	4 x 16	6 x 16	8 x 16
Millimeters	76 x 305	89 x 38	102 x 406	152 x 406	203 x 406

50T | A50T

Round Corner - Non-Beveled Push Plate

Certification: Meets ANSI A156.6 for J301 Push Plate
 Gauge: • 50T - 0.050" (1.3 mm)
 • A50T - 0.062" (1.6 mm)
 Materials: Aluminum, brass, bronze, stainless steel
 Finishes: US3, US4, US10, US10B, US26, US26D, US28, US32, US32D
 Fasteners: Six (6) #6 x 5/8" OPH tapping screws
 Options: May be ordered cut for cylinder (CFC) or engraved "PUSH"
 Notes: For sizes or finishes not listed in this catalog, contact Hager Customer Service for availability

Available in Sizes			
Inches	3 x 12	3-1/2 x 15	4 x 16
Millimeters	76 x 305	89 x 38	102 x 406





60S

Square Corner - Beveled Push Plate

Certification: Meets ANSI A156.6 for J304 Push Plate
 Gauge: 0.125" (3.2 mm)
 Materials: Plastic laminate
 Finishes: PG - Grey, PK - Black, CO - Brown
 Fasteners: Six (6) #6 x 5/8" OPH tapping screws
 Options: May be ordered cut for cylinder (CFC) or engraved "PUSH"
 Notes: For sizes or finishes not listed in this catalog, contact Hager Customer Service for availability

Available in Sizes					
Inches	3 x 12	3-1/2 x 15	4 x 16	6 x 16	8 x 16
Millimeters	76 x 305	89 x 38	102 x 406	152 x 406	203 x 406

70S

Square Corner - Beveled Push Plate

Certification: Meets ANSI A156.6 for J304 Push Plate
 Gauge: 0.125" (3.2 mm)
 Materials: Clear plastic laminate
 Finishes: PC - Clear
 Fasteners: Six (6) #6 x 5/8" OPH tapping screws
 Options: May be ordered cut for cylinder (CFC) or engraved "PUSH"
 Notes: For sizes or finishes not listed in this catalog, contact Hager Customer Service for availability

Available in Sizes					
Inches	3 x 12	3-1/2 x 15	4 x 16	6 x 16	8 x 16
Millimeters	76 x 305	89 x 38	102 x 406	152 x 406	203 x 406

80S

Square Corner - Beveled Push Plate

Certification: Meets ANSI A156.6 for J304 Push Plate
 Gauge: 0.125" (3.2 mm)
 Materials: Aluminum, brass, bronze, stainless steel
 Finishes: US3, US4, US10, US10B, US26, US26D, US28, US32, US32D
 Fasteners: Six (6) #6 x 5/8" OPH tapping screws
 Options: May be ordered cut for cylinder (CFC) or engraved "PUSH"
 Notes: For sizes or finishes not listed in this catalog, contact Hager Customer Service for availability

Available in Sizes					
Inches	3 x 12	3-1/2 x 15	4 x 16	6 x 16	8 x 16
Millimeters	76 x 305	89 x 38	102 x 406	152 x 406	203 x 406





TRIM & AUXILIARY

90R

Radius Corner - Non-Beveled Push Plate

Certification: Meets ANSI A156.6 for J304 Push Plate
 Gauge: 0.125" (3.2 mm)
 Materials: Aluminum, brass, bronze, stainless steel
 Finishes: US3, US4, US10, US10B, US26, US26D, US28, US32, US32D
 Fasteners: Six (6) #6 x 5/8" OPH tapping screws
 Options: May be ordered cut for cylinder (CFC) or engraved "PUSH"
 Notes: For sizes or finishes not listed in this catalog, contact Hager Customer Service for availability

Available in Sizes					
Inches	3 x 12	3-1/2 x 15	4 x 16	6 x 16	8 x 16
Millimeters	76 x 305	89 x 38	102 x 406	152 x 406	203 x 406

100T

Square Corner - Rounded Bevel Top and Bottom Push Plate

Certification: Meets ANSI A156.6 for J304 Push Plate
 Gauge: 0.125" (3.2 mm)
 Materials: Aluminum, brass, bronze, stainless steel
 Finishes: US3, US4, US10, US10B, US26, US26D, US28, US32, US32D
 Fasteners: Six (6) #6 x 5/8" OPH tapping screws
 Options: May be ordered cut for cylinder (CFC) or engraved "PUSH"
 Notes: For sizes or finishes not listed in this catalog, contact Hager Customer Service for availability

Available in Sizes					
Inches	3 x 12	3-1/2 x 15	4 x 16	6 x 16	8 x 16
Millimeters	76 x 305	89 x 38	102 x 406	152 x 406	203 x 406

110S

Half Circle Push Plate

Certification: Meets ANSI A156.6 for J301 Push Plate
 Plate: 8" x 16" (203 mm x 406 mm)
 Gauge: 0.050" (1.3 mm)
 Materials: Aluminum, brass, bronze, stainless steel
 Finishes: US3, US4, US10, US10B, US26, US26D, US28, US32, US32D
 Fasteners: Six (6) #6 x 5/8" OPH tapping screws
 Options: May be ordered cut for cylinder (CFC) or engraved "PUSH"
 Notes: For sizes or finishes not listed in this catalog, contact Hager Customer Service for availability





120L

Pull Plate with Lip - Non-Beveled

Certification: Meets ANSI A156.6 for J303 Plate
 Plate: 3-1/2" x 16" (89 mm x 406 mm)
 Lip Projection: 1-1/8" (29 mm)
 Gauge: 0.125" (3.2 mm)
 Materials: Aluminum, brass, bronze, stainless steel
 Finishes: US3, US4, US10, US10B, US26, US26D, US28, US32, US32D
 Fasteners: Six (6) #6 x 5/8" OPH tapping screws
 Options:

- Other sizes available, please specify
- May be ordered cut for cylinder (CFC) or engraved

 Notes: For sizes or finishes not listed in this catalog, contact Hager Customer Service for availability



121L

Cylinder Pull - Beveled

Plate: 2" x 3-3/4" (51 mm x 95 mm)
 Lip Projection: 1-1/8" (29 mm)
 Cylinder Cutout: 1-1/4" (32 mm) diameter
 Gauge: 0.125" (3.2 mm)
 Materials: Aluminum, brass, bronze, stainless steel
 Finishes: US3, US4, US10, US10B, US26, US26D, US28, US32, US32D
 Fasteners: Attached by lock cylinder
 Notes:

- 1/4"-20 x 3/8" stud installed on reverse side to eliminate twisting
- For sizes or finishes not listed in this catalog, contact Hager Customer Service for availability



122L

Security Pull/Push Plate Set - Beveled

Certification: Meets ANSI A156.6 for combination J304 Push Plate and J303 Flush Pull
 Push Plate: 4" x 16" (102 mm x 406 mm)
 Pull Plate: 4" x 9-1/4" (102 mm x 235 mm)
 Lip Projection: 2-1/8" (54 mm)
 Gauge: 0.125" (3.2 mm)
 Fasteners: Four (4) 8-32 FPHMS (Security Torx) sex nuts and bolts
 Two (2) 8-32 x 1/2" FPHMS (Security Torx)
 Materials: Stainless steel
 Finishes: US32D
 Notes: For sizes or finishes not listed in this catalog, contact Hager Customer Service for availability



TRIM & AUXILIARY



125S

Bent Push Bar

Certification: Meets ANSI A156.6 for J501 Push Bar
 Bar Size: 3/8" x 1-1/4" (10 mm x 32 mm)
 Projection: 2-1/8" (54 mm)
 Base Plate: 1" x 3" (25 mm x 76 mm)
 Materials: Aluminum, brass, bronze, stainless steel
 Finishes: US3, US4, US10, US10B, US28, US32, US32D
 Fasteners: Two (2) #8 FPH tapping screws and one (1) 1/4 - 20 OPHMS
 Options: May be ordered with thru-bolts in place of surface screws



126S

Push Bar

Certification: Meets ANSI A156.6 for J501 Push Bar
 Bar Size: 3/8" x 1-1/4" (10 mm x 32 mm)
 Projection: 2-1/8" (54 mm)
 Base Plate: 1" x 3" (25 mm x 76 mm)
 Materials: Aluminum, brass, bronze, stainless steel
 Finishes: US3, US4, US10, US10B, US28, US32, US32D
 Fasteners: Four (4) #8 FPH tapping screws
 Options: May be ordered with thru-bolts in place of surface screws



127S

Push Bar

Certification: Meets ANSI A156.6 for J501 Push Bar
 Bar Size: 3/8" x 1-1/4" (10 mm x 32 mm)
 Projection: 3/4" (19 mm)
 Base Plate: 1-1/4" x 1-1/4" (32 mm x 32 mm)
 Materials: Aluminum, brass, bronze, stainless steel
 Finishes: US3, US4, US10, US10B, US28, US32, US32D
 Fasteners: Two (2) 1/4-20 FPHMS
 Options: May be ordered with thru bolts in place of surface screws



128P

Wide Push Bar

Certification: Meets ANSI A156.6 for J501 Push Bar
 Bar Size: 3/8" x 3" (10 mm x 76 mm)
 Projection: 2-1/8" (54 mm)
 Base Plate: 1-1/2" x 4-1/2" (38 mm x 114 mm)
 Fasteners: Eight (8) FPH tapping screws
 Materials: Aluminum, brass, bronze, stainless steel
 Finishes: US3, US4, US10, US10B, US26, US26D, US28, US32, US32D

All push bar units are made to order. Specify CTC lengths, fastening method unless standard, and type of door (WO, HM, AL, etc.).





128S
Wide Push Bar

Certification: Meets ANSI A156.6 for J501 Push Bar
 Bar Size: 3/8" x 3" (10 mm x 76 mm)
 Projection: 2" (51 mm)
 Base Plate: 1-1/2" x 4-1/2" (38 mm x 114 mm)
 Door Thickness: 1-3/4" (45 mm) - Standard
 Fasteners: Two (2) 1/4 - 20 thru bolts with finish washers
 Materials: Aluminum, brass, bronze, stainless steel
 Finishes: US3, US4, US10, US10B, US26, US26D, US28, US32, US32D
 Notes: 128S is same as 128P, but without base plates



129P
Wide Push Bar

Certification: Meets ANSI A156.6 for J501 Push Bar
 Bar Size: 3/8" x 3" (10 mm x 76 mm)
 Projection: 3/4" (19 mm)
 Base Plate: 1" x 3" (25 mm x 76 mm)
 Materials: Aluminum, brass, bronze, stainless steel
 Finishes: US3, US4, US10, US10B, US28, US32, US32D
 Fasteners: Two (2) 1/4-20 FPHMS
 Options:

- May be ordered with thru bolts in place of surface screws
- #14 Flat head wood screws available on special order



130S
Round Push Bar

Certification: Meets ANSI A156.6 for J501 Push Bar
 Bar Stock: 1" (25 mm)
 Projection: 2-1/2" (64 mm)
 Door Thickness: 1-3/4" (45 mm) - Standard
 Materials: Aluminum, brass, bronze, stainless steel
 Finishes: US3, US4, US10, US10B, US28, US32, US32D
 Fasteners: Two (2) 1/4-20 thru-bolts with finish washers
 Options: May be ordered with Type 5 concealed mountings at extra charge



131S
Round Push Bar

Certification: Meets ANSI A156.6 for J501 Push Bar
 Bar Stock: 1" (25 mm)
 Projection: 2-5/8" (67 mm)
 Base Diameter: 2" (51 mm)
 Door Thickness: 1-3/4" (45 mm) - Standard
 Fasteners: Two (2) 1/4-20 thru-bolts with finish washers
 Materials: Aluminum, brass, bronze, stainless steel
 Finishes: US3, US4, US10, US10B, US28, US32, US32D
 Options: May be ordered with Type 5 concealed mountings at extra charge

All push bar units are made to order. Specify CTC lengths, fastening method unless standard, and type of door (WO, HM, AL, etc.).





TRIM & AUXILIARY



133S

Round Push Bar

Certification: Meets ANSI A156.6 for J501 Push Bar
Bar Stock: 3/4" (19 mm)
Projection: 2-1/4" (57 mm)
Door Thickness: 1-3/4" (45 mm) - Standard
Materials: Aluminum, brass, bronze, stainless steel
Finishes: US3, US4, US10, US10B, US28, US32, US32D
Fasteners: Two (2) 1/4 - 20 thru-bolts with finish washers



134S

Round Push Bar

Certification: Meets ANSI A156.6 for J501 Push Bar
Bar Stock: 3/4" (19 mm)
Projection: 2-3/8" (60 mm)
Base Diameter: 1-1/4" (32 mm)
Door Thickness: 1-3/4" (45 mm) - Standard
Fasteners: Two (2) 1/4 - 20 thru-bolts with finish washers
Materials: Aluminum, brass, bronze, stainless steel
Finishes: US3, US4, US10, US10B, US28, US32, US32D
Options: May be ordered with Type 5 concealed mountings at extra charge



136S

Round Push Bar

Certification: Meets ANSI A156.6 for J501 Push Bar
Bar Stock: 1-1/4" (32 mm)
Projection: 3" (76 mm)
Door Thickness: 1-3/4" (45 mm) - Standard
Materials: Aluminum, brass, bronze, stainless steel
Finishes: US3, US4, US10, US10B, US28, US32, US32D
Fasteners: Two (2) 5/16 - 18 thru-bolts with finish washers
Options: May be ordered with Type 5 concealed mountings at extra charge



137S

Round Push Bar

Certification: Meets ANSI A156.6 for J501 Push Bar
Bar Stock: 1-1/4" (32 mm)
Projection: 3-1/8" (79 mm)
Base Diameter: 2" (51 mm)
Door Thickness: 1-3/4" (45 mm) - Standard
Fasteners: Two (2) 5/16 - 18 thru-bolts with finish washers
Materials: Aluminum, brass, bronze, stainless steel
Finishes: US3, US4, US10, US10B, US28, US32, US32D
Options: May be ordered with Type 5 concealed mountings at extra charge

All push bar units are made to order. Specify CTC lengths, fastening method unless standard, and type of door (WO, HM, AL, etc.).





138P

Round Push/Pull Set

Certification: Meets ANSI A156.6 for J504 Bar Sets
 Bar Stock: 1" (25 mm)
 Projection: 2-1/2" (64 mm)
 Materials: Aluminum, brass, bronze, stainless steel
 Finishes: US3, US4, US10, US10B, US28, US32, US32D
 Fasteners: Two (2) 1/4-20 Type 3 concealed cone



139P

Round Push/Pull Set

Certification: Meets ANSI A156.6 for J504 Bar Sets
 Bar Stock: 3/4" (19 mm)
 Projection: 2-1/4" (60 mm)
 Materials: Aluminum, brass, bronze, stainless steel
 Finishes: US3, US4, US10, US10B, US28, US32, US32D
 Fasteners: Two (2) 1/4-20 Type 3 concealed cone



140P

Round Push/Pull Set

Certification: Meets ANSI A156.6 for J504 Bar Sets
 Bar Stock: 1-1/4" (32 mm)
 Projection: 3" (76 mm)
 Materials: Aluminum, brass, bronze, stainless steel
 Finishes: US3, US4, US10, US10B, US28, US32, US32D
 Fasteners: Two (2) 5/16-18 Type 3 concealed cone



150D | 150V | 150B

Round Push/Pull Set*

Certification: Meets ANSI A156.6 for J504 Bar Sets
 Bar Stock: 3/4" (19 mm)
 Projection: 2-1/4" (57 mm)
 Pull CTC: 8" (203 mm)
 Materials: Aluminum, brass, bronze, stainless steel
 Finishes: US3, US4, US10, US10B, US28, US32, US32D

*
D = Standard Fastening - One (1) Type 7 spanner collar connection between push bar and pull plus two (2) Type 1 connections for other ends of push bar and pull.
V = Fully Concealed Fastening - One (1) Type 7 spanner collar connection between push bar and pull plus two (2) Type 5 connections for ends of push bar and pull.
B = Tempered Glass Fastening - One (1) Type 7 spanner collar connection between push bar and pull plus two (2) Type 8 connections for ends of push bar and pull plus gaskets that separate metal parts from glass.

All push bar units are made to order. Specify CTC lengths, fastening method unless standard, and type of door (WO, HM, AL, etc.).



TRIM & AUXILIARY



151D | 151V | 151B

Round Push/Pull Set*

Certification: Meets ANSI A156.6 for J504 Bar Sets
 Bar Stock: 3/4" (19 mm)
 Projection: 2-1/4" (57 mm)
 Pull CTC: 10" (254 mm)
 Materials: Aluminum, brass, bronze, stainless steel
 Finishes: US3, US4, US10, US10B, US28, US32, US32D



152D | 152V | 152B

Round Push/Pull Set*

Certification: Meets ANSI A156.6 for J504 Bar Sets
 Bar Stock: 3/4" (19 mm)
 Projection: 2-1/4" (57 mm)
 Pull CTC: 12" (305 mm)
 Materials: Aluminum, brass, bronze, stainless steel
 Finishes: US3, US4, US10, US10B, US28, US32, US32D



153D | 153V | 153B

Round Push/Pull Set*

Certification: Meets ANSI A156.6 for J504 Bar Sets
 Bar Stock: 1" (25 mm)
 Projection: 2-1/2" (64 mm)
 Pull CTC: 10" (254 mm)
 Materials: Aluminum, brass, bronze, stainless steel
 Finishes: US3, US4, US10, US10B, US28, US32, US32D



154D | 154V | 154B

Round Push/Pull Set*

Certification: Meets ANSI A156.6 for J504 Bar Sets
 Bar Stock: 1" (25 mm)
 Projection: 2-1/2" (64 mm)
 Pull CTC: 12" (305 mm)
 Materials: Aluminum, brass, bronze, stainless steel
 Finishes: US3, US4, US10, US10B, US28, US32, US32D

*

D = Standard Fastening - One (1) Type 7 spanner collar connection between push bar and pull plus two (2) Type 1 connections for other ends of push bar and pull.

V = Fully Concealed Fastening - One (1) Type 7 spanner collar connection between push bar and pull plus two (2) Type 5 connections for ends of push bar and pull.

B = Tempered Glass Fastening - One (1) Type 7 spanner collar connection between push bar and pull plus two (2) Type 8 connections for ends of push bar and pull plus gaskets that separate metal parts from glass.

All push bar units are made to order. Specify CTC lengths, fastening method unless standard, and type of door (WO, HM, AL, etc.).





155D | 155V | 155B

Round Push/Pull Set*

Certification: Meets ANSI A156.6 for J504 Bar Sets
 Bar Stock: 1" (25 mm)
 Projection: 2-1/2" (64 mm)
 Pull CTC: 18" (457 mm)
 Materials: Aluminum, brass, bronze, stainless steel
 Finishes: US3, US4, US10, US10B, US28, US32, US32D



156D | 156V | 156B

Round Push/Pull Set*

Certification: Meets ANSI A156.6 for J505 Bar Sets
 Bar Stock: 3/4" (19 mm) diameter
 Projection: 2-1/2" (64 mm)
 Pull CTC: 8" (203 mm)
 Offset: 2-1/2" (64 mm), 90° Standard
 Materials: Aluminum, brass, bronze, stainless steel
 Finishes: US3, US4, US10, US10B, US28, US32, US32D
 Options: For 45° offset pull, add prefix "X" (i.e., X156D) to number
 Notes: Non-reversible; specify handing



157D | 157V | 157B

Round Push/Pull Set*

Certification: Meets ANSI A156.6 for J505 Bar Sets
 Bar Stock: 3/4" (19 mm) diameter
 Projection: 2-1/2" (64 mm)
 Pull CTC: 10" (254 mm)
 Offset: 2-1/2" (64 mm), 90° Standard
 Materials: Aluminum, brass, bronze, stainless steel
 Finishes: US3, US4, US10, US10B, US28, US32, US32D
 Options: For 45° offset pull, add prefix "X" (i.e., X157D) to number
 Notes: Non-reversible; specify handing



158D | 158V | 158B

Round Push/Pull Set*

Certification: Meets ANSI A156.6 for J505 Bar Sets
 Bar Stock: 3/4" (19 mm) diameter
 Projection: 2-1/2" (64 mm)
 Pull CTC: 12" (305 mm)
 Offset: 2-1/2" (64 mm), 90° Standard
 Materials: Aluminum, brass, bronze, stainless steel
 Finishes: US3, US4, US10, US10B, US28, US32, US32D
 Options: For 45° offset pull, add prefix "X" (i.e., X158D) to number
 Notes: Non-reversible; specify handing

*
D = Standard Fastening - One (1) Type 7 spanner collar connection between push bar and pull plus two (2) Type 1 connections for other ends of push bar and pull.
V = Fully Concealed Fastening - One (1) Type 7 spanner collar connection between push bar and pull plus two (2) Type 5 connections for ends of push bar and pull.
B = Tempered Glass Fastening - One (1) Type 7 spanner collar connection between push bar and pull plus two (2) Type 8 connections for ends of push bar and pull plus gaskets that separate metal parts from glass.

All push bar units are made to order. Specify CTC lengths, fastening method unless standard, and type of door (WO, HM, AL, etc.).



TRIM & AUXILIARY



159D | 159V | 159B

Round Push/Pull Set*

Certification: Meets ANSI A156.6 for J505 Bar Sets
 Bar Stock: 1" (25 mm)
 Projection: 2-1/2" (76 mm)
 Pull CTC: 10" (254 mm)
 Offset: 3" (76 mm), 90° Standard
 Materials: Aluminum, brass, bronze, stainless steel
 Finishes: US3, US4, US10, US10B, US28, US32, US32D
 Options: For 45° offset pull, add prefix "X" to number (i.e., X159D)
 Notes: Non-reversible; specify handing



160D | 160V | 160B

Round Push/Pull Set*

Certification: Meets ANSI A156.6 for J505 Bar Sets
 Bar Stock: 1" (25 mm)
 Projection: 2-1/2" (76 mm)
 Pull CTC: 12" (305 mm)
 Offset: 3" (76 mm), 90° Standard
 Materials: Aluminum, brass, bronze, stainless steel
 Finishes: US3, US4, US10, US10B, US28, US32, US32D
 Options: For 45° offset pull, add prefix "X" to number (i.e., X160D)
 Notes: Non-reversible; specify handing



161D | 161V | 161B

Round Push/Pull Set*

Certification: Meets ANSI A156.6 for J505 Bar Sets
 Bar Stock: 1" (25 mm)
 Projection: 2-1/2" (76 mm)
 Pull CTC: 18" (457 mm)
 Offset: 3" (76 mm), 90° Standard
 Materials: Aluminum, brass, bronze, stainless steel
 Finishes: US3, US4, US10, US10B, US28, US32, US32D
 Options: For 45° offset pull, add prefix "X" to number (i.e., X161D)
 Notes: Non-reversible; specify handing



164D | 164V | 164B

Round Push/Pull Set*

Certification: Meets ANSI A156.6 for J504 Bar Sets
 Bar Stock: 1-1/4" (32 mm)
 Projection: 3" (76 mm)
 Pull CTC: 12" (305 mm)
 Materials: Aluminum, brass, bronze, stainless steel
 Finishes: US3, US4, US10, US10B, US28, US32, US32D

*

D = Standard Fastening - One (1) Type 7 spanner collar connection between push bar and pull plus two (2) Type 1 connections for other ends of push bar and pull.

V = Fully Concealed Fastening - One (1) Type 7 spanner collar connection between push bar and pull plus two (2) Type 5 connections for ends of push bar and pull.

B = Tempered Glass Fastening - One (1) Type 7 spanner collar connection between push bar and pull plus two (2) Type 8 connections for ends of push bar and pull plus gaskets that separate metal parts from glass.

All push bar units are made to order. Specify CTC lengths, fastening method unless standard, and type of door (WO, HM, AL, etc.).





165D | 165V | 165B

Round Push/Pull Set*

Certification: Meets ANSI A156.6 for J504 Bar Sets
 Bar Stock: 1-1/4" (32 mm)
 Projection: 3" (76 mm)
 Pull CTC: 18" (457 mm)
 Materials: Aluminum, brass, bronze, stainless steel
 Finishes: US3, US4, US10, US10B, US28, US32, US32D



167D | 167V | 167B

Round Push/Pull Set*

Certification: Meets ANSI A156.6 for J505 Bar Sets
 Bar Stock: 1-1/4" (32 mm)
 Projection: 3" (76 mm)
 Pull CTC: 18" (457 mm)
 Offset: 3-3/4" (96 mm), 90° Standard
 Materials: Aluminum, brass, bronze, stainless steel
 Finishes: US3, US4, US10, US10B, US28, US32, US32D
 Notes: Non-reversible; specify handing



170D

Push/Pull Set

Certification: Meets ANSI A156.6 for J502 Bar Sets
 Bar Stock: 3/8" x 1-1/4" (10 mm x 32 mm)
 Projection of Pull Bar: 2-1/2" (64 mm)
 Projection of Push Bar: 3/4" (19 mm)
 Base: 1-1/4" x 1-1/4" (32 x 32 mm)
 Horizontal Spacing CTC: 8" (203 mm)
 Materials: Aluminum, brass, bronze, stainless steel
 Finishes: US3, US4, US10, US10B, US28, US32, US32D
 Notes:

- Bars are mounted BTB with 1/4"-20 thru bolt type 4 mounting
- Non-reversible; specify handing

*
D = Standard Fastening - One (1) Type 7 spanner collar connection between push bar and pull plus two (2) Type 1 connections for other ends of push bar and pull.
V = Fully Concealed Fastening - One (1) Type 7 spanner collar connection between push bar and pull plus two (2) Type 5 connections for ends of push bar and pull.
B = Tempered Glass Fastening - One (1) Type 7 spanner collar connection between push bar and pull plus two (2) Type 8 connections for ends of push bar and pull plus gaskets that separate metal parts from glass.

All push bar units are made to order. Specify CTC lengths, fastening method unless standard, and type of door (WO, HM, AL, etc.).

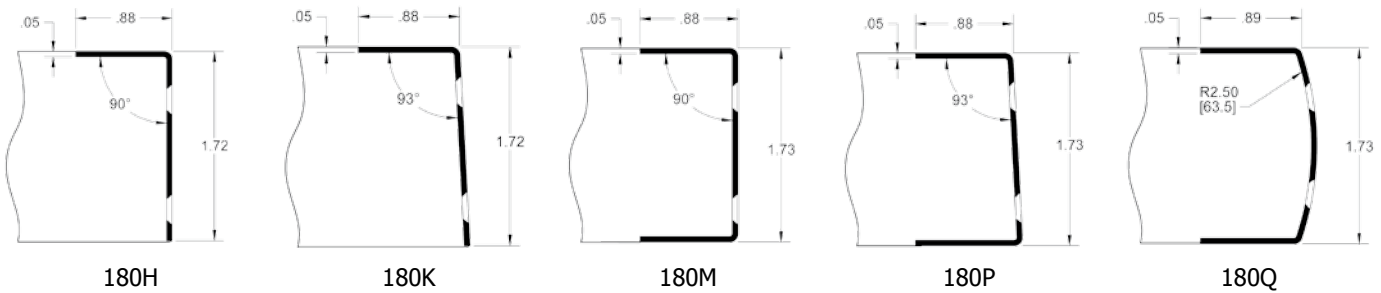


TRIM & AUXILIARY

180H | 180K | 180M | 180P | 180Q

Mortise Door Edging

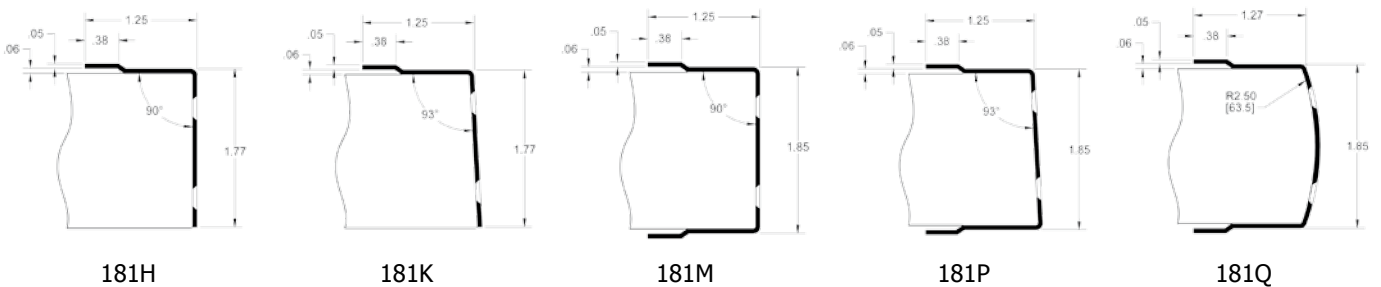
- Certification: Meets ANSI A156.6 Door Edging Type J201 through J212
 Standard Length: 36" – 42" (914 mm – 1067 mm)
 Materials: Aluminum, stainless steel
 Gauge: 0.045" - 0.050" (1.1 mm - 1.3 mm)
 Finishes: US28, US32D
 Fasteners: #6 x 3/4" FPH tapping screws
 Options:
 - Other lengths by quotation
 - Hinge cutout available
 - Latch cutout available
 - UL rated edging available
 Order:
 - Provide actual rather than typical door thickness
 - Provide item #, size and finish (i.e., 180H - 40"-32D)
 Notes:
 - Cutout will hand edging; specify handing information
 - Standard edge guards are made for 1-3/4" +0, -1/32" thick doors



181H | 181K | 181M | 181P | 181Q

Overlap Door Edging

- Certification: Meets ANSI A156.6 Door Edging Type J201 through J212
 Standard Length: 36" – 42" (914 mm – 1067 mm)
 Materials: Aluminum, stainless steel
 Gauge: 0.045" - 0.050" (1.1 mm - 1.3 mm)
 Finishes: US28, US32D
 Fasteners: #6 x 3/4" FPH tapping screws
 Options:
 - Other lengths by quotation
 - Hinge cutout available
 - Latch cutout available
 - UL rated edging available
 Order:
 - Provide actual rather than typical door thickness
 - Provide item #, size and finish (i.e., 181H - 40"-32D)
 Notes:
 - Cutout will hand edging; specify handing information
 - Standard edge guards are made for 1-3/4" +0, -1/32" thick doors

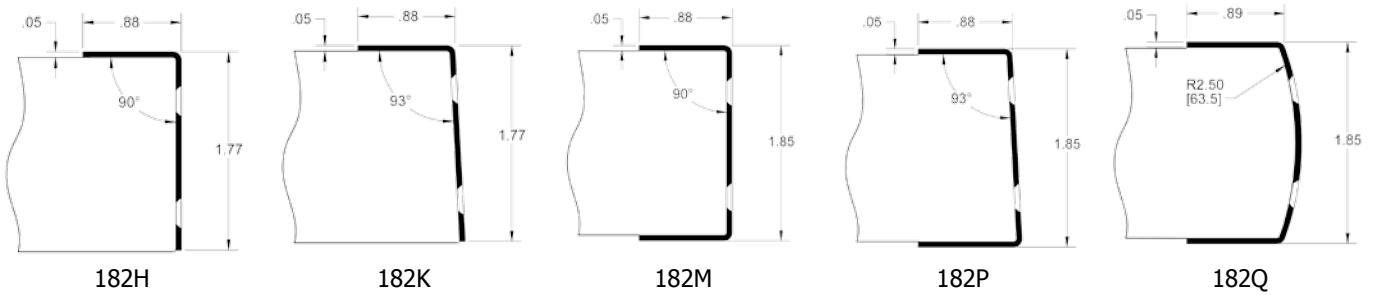




182H | 182K | 182M | 182P | 182Q

Non-Mortise Door Edging

- Certification: Meets ANSI A156.6 Door Edging Type J201 through J212
 Standard Length: 36" – 42" (914 mm – 1067 mm)
 Materials: Aluminum, stainless steel
 Gauge: 0.045" - 0.050" (1.1 mm - 1.3 mm)
 Finishes: US28, US32D
 Fasteners: #6 x 3/4" FPH tapping screws
 Options:
 - Other lengths by quotation
 - Hinge cutout available
 - Latch cutout available
 - UL rated edging available
 Order:
 - Provide actual rather than typical door thickness
 - Provide item #, size and finish (i.e., 182H - 40"-32D)
 Notes:
 - Cutout will hand edging; specify handing information
 - Standard edge guards are made for 1-3/4" +0, -1/32" thick doors



185G

Corner Guard

- Certification: Meets ANSI A156.6 for J210
 Size: 3" x 3" x 40" (76 mm x 76 mm x 1016 mm)
 Gauge: 0.050" (1.3 mm)
 Materials: Aluminum, stainless steel
 Finishes: US28, US32D
 Fasteners: #6 x 3/4" FPH Tapping screws
 Options: Mounting with double-stick tape instead of screws
 Notes:
 - 90° bend standard
 - Other lengths by quotation
 - #6 x 1" screws available upon request



TRIM & AUXILIARY

Door Protection Plates

The metal door protection plates below meet ANSI A156.6 for J101 Metal Armor Plate, J102 Metal Kickplate, and J103 Metal Mop Plate. The plastic door protection plates below meet ANSI A156.6 for J105 Plastic Armor Plate, J106 Plastic Kickplate, and J107 Plastic Mop Plate. Options for all plates include countersunk holes, UL armor plate stamped, self-adhesive tape, spanner head screws, torx head screws, round corners, wrap around side and bottom return, and 0.125" (3.2 mm) material. All plates below are supplied standard with #6 x 5/8" truss head screws (unless specified otherwise). They are available in mop plate, kick plate, stretcher plate, and armor plate sizes.

- Mop Plate:** Protects the bottom of the pull side of doors subject to cleaning and mopping procedures.
- Kick Plate:** Protects the bottom of the push side of doors subject to scuffing from foot traffic.
- Stretcher Plate:** Protects doors in specific areas where constant contact is made by stretchers, service carts, or other equipment.
- Armor Plate:** Protects lower half of doors from abuse by carts, trucks, and rough usage.

NFPA Note (Applies to 190S, 193S, 194S, 198S, and 225S)

NFPA 80 Standards - 6.4.5 Protection Plates 6.4.5.1 - Factory installed protection plates shall be installed in accordance with the listing of the door. 6.4.5.2 - Field installed protection plates shall be labeled and installed in accordance with their listing. 6.4.5.3 - Labeling shall not be required where the top of the protection plate is not more than 16" (406 mm) above the bottom of the door.

190S

Gauge: 0.050" (1.3 mm)
 Materials: Aluminum, brass, bronze, stainless steel
 Finishes: US3, US4, US10, US10B, US28, US32, US32D
 Bevel: None
 Options: UL Listed for US32 and US32D*

193S

Gauge: 0.050" (1.3 mm)
 Materials: Aluminum, brass, bronze, stainless steel
 Finishes: US3, US4, US10, US10B, US28, US32, US32D
 Bevel: 3 edges
 Options: UL Listed for US32 and US32D*

194S

Gauge: 0.050" (1.3 mm)
 Materials: Aluminum, brass, bronze, stainless steel
 Finishes: US3, US4, US10, US10B, US28, US32, US32D
 Bevel: 4 edges
 Options: UL Listed for US32 and US32D*

198S

Gauge: 0.038" (0.8 mm)
 Materials: Stainless steel
 Finishes: US32D
 Options: UL Listed*

199B

Gauge: 0.038" (0.8 mm)
 Materials: Aluminum
 Finishes: Bright gold anodized
 Fasteners: #6 x 5/8" TPH Tapping Screws

220S

Gauge: 0.062" (1.6 mm)
 Materials: Aluminum, brass, bronze, stainless steel
 Finishes: US3, US4, US10, US10B, US28, US32, US32D
 Bevel: None

223S

Gauge: 0.062" (1.6 mm)
 Materials: Aluminum, brass, bronze, stainless steel
 Finishes: US3, US4, US10, US10B, US28, US32, US32D
 Bevel: 3 edges

224S

Gauge: 0.062" (1.6 mm)
 Materials: Aluminum, brass, bronze, stainless steel
 Finishes: US3, US4, US10, US10B, US28, US32, US32D
 Bevel: 4 edges

204S

Gauge: 0.125" (3.2 mm)
 Materials: Clear plastic
 Bevel: 4 edges

214S

Gauge: 0.125" (3.2 mm)
 Materials: Plastic laminate
 Bevel: 4 edges
 Colors: Black, Brown, Grey
 Notes: Other colors are available and will be subject to minimum order quantities; priced on application

225S

Gauge: 0.060" (1.9 mm)
 Materials: Kydex®
 Colors: CBO - Calcutta Black, KGO - Beige, KHO - Chocolate
 Notes: Other colors are available and will be subject to minimum order quantities; priced on application
 Options: UL Listed*



*Must specify UL stamp.





230W

Convex Wall Stop

Certification: Meets ANSI A156.16 for L02101
 Diameter: 2-15/32" (63 mm)
 Projection: 1-3/32" (28 mm)
 Materials: Cast brass, bronze with grey rubber bumper
 Finishes: US3, US4, US10, US10B, US15, US15A, US19, US26, US26D
 Fasteners: One (1) #10 x 1-1/2" PPHWS with plastic and toggle anchor.
 Notes:

- Concealed tamper proof mounting
- Easy installation by inserting screwdriver through small hole in bumper
- Specify 230T for machine screw and toggle nut screwpack (10 pk)



232W | BL232W

Convex Wall Stop

Certification: Meets ANSI A156.16 for L02101
 Diameter: 2-7/16" (62 mm)
 Projection: 1" (25 mm)
 Materials: Wrought brass, bronze, stainless steel with grey rubber bumper
 Finishes: US3, US4, US5, US9, US10, US10B, US15, US15A, US19, US26, US26D, US32, US32D
 Fasteners: One (1) #10 x 1-1/2" PPHWS with plastic and toggle anchor
 Notes:

- Concealed tamper proof mounting
- Easy installation by inserting screwdriver through small hole in bumper
- Specify 230T for machine screw and toggle nut screwpack (10 pk)
- BL232W is 232W case quantity 50



234W

Concave Wall Stop

Certification: Meets ANSI A156.16 for L02251
 Diameter: 2-15/32" (63 mm)
 Projection: 1-3/32" (28 mm)
 Materials: Cast brass, bronze with grey rubber bumper
 Finishes: US3, US4, US10, US10B, US15, US15A, US19, US26, US26D
 Fasteners: One (1) #10 x 1-1/2" PPHWS w/ plastic and toggle anchor
 Notes:

- Easy installation by inserting screwdriver through small hole in rubber bumper
- Concealed tamper proof mounting
- Concave rubber bumper prevents damage to locksets with projecting buttons
- Specify 230T for machine screw and toggle nut screwpack (10 pk)



236W | BL236W

Concave Wall Stop

Certification: Meets ANSI A156.16 for L02251
 Diameter: 2-7/16" (75 mm)
 Projection: 1" (25 mm)
 Materials: Wrought brass, bronze, stainless steel with grey rubber bumper
 Finishes: US3, US4, US5, US9, US10, US10B, US15, US15A, US19, US26, US26D, US32, US32D
 Fasteners: One (1) #10 x 1-1/2" PPHWS w/ plastic and toggle anchor
 Notes:

- Easy installation by inserting screwdriver through small hole in rubber bumper
- Concealed tamper proof mounting
- Concave rubber bumper prevents damage to locksets with projecting buttons
- Specify 230T for machine screw and toggle nut screwpack (10 PK)
- BL236W is 236W case quantity 50





TRIM & AUXILIARY



250W

Convex Wall Stop

- Diameter: 1" (25 mm)
Projection: 9/16" (14 mm)
Materials: Brass
Finishes: US3, US4, US10, US10B, US15, US15A, US19, US26, US26D
Fasteners: One (1) #6 x 3/4" screw with plastic anchor and one (1) 0.052 diameter nail
Notes:
- Concealed mounting screw prevents vandalism
 - For use on drywall
 - Compact design



251W

Concave Wall Stop

- Diameter: 1-7/8" (48 mm)
Projection: 25/32" (20 mm)
Materials: Adhesive backed rubber bumper
Finish: Grey only
Notes:
- Concave bumper prevents damage to locksets with projecting buttons
 - For areas where concealed mounting is not required
 - Adhesive backing for use on clean smooth flat surfaces only



254S

Wall Stop & Holder

- Certification: Meets ANSI A156.16 for L01341
Base Diameter: 2-11/32" (60 mm)
Base Projection: 3-1/2" (89 mm)
Engaged Projection: 5-19/32" (142 mm)
Keeper: 1" x 2" (25 mm x 51 mm)
Fasteners: Five (5) #10 x 1" FPHWS, and three (3) plastic anchors
Materials: Cast brass with black rubber bumper
Finishes: US3, US4, US10, US10B, US15, US26, US26D
Notes:
- For use on drywall
 - Manual holder ideal for interior and exterior applications
 - Unit functions as a stop, but can serve as a "Hold Open" when hook is manually engaged
 - Ideal for use with locksets with a projection of 3-5/16" (84 mm) or less



254W

Wall Stop & Holder

- Certification: Meets ANSI A156.16 for L01351
Base Diameter: 2-11/32" (60 mm)
Base Projection: 3-1/2" (89 mm)
Engaged Projection: 5-19/32" (142 mm)
Keeper: 1" x 2" (25 mm x 51 mm)
Fasteners: Three (3) #10 x 1" FPH tapping screw, one (1) plastic anchor, one (1) 5/16-18 x 2-1/2" threaded stud, and one (1) 5/16-18 lead anchor
Materials: Cast brass with black rubber bumper
Finishes: US3, US4, US10, US10B, US15, US26, US26D
Notes:
- For use on concrete walls
 - Manual holder ideal for interior and exterior applications
 - Unit functions as a stop, but can serve as a "Hold Open" when hook is manually engaged
 - Ideal for use with locksets with a projection of 3-5/16" (84 mm) or less





255S

Wall Stop

Certification: Meets ANSI A156.16 for L02011
 Base Diameter: 2-11/32" (60 mm)
 Projection: 3-11/16" (94 mm)
 Fasteners: Three (3) #10 x 1" OPHWS and three (3) plastic anchors
 Materials: Cast brass with black rubber bumper
 Finishes: US3, US4, US10, US10B, US15, US26, US26D
 Notes:

- For use on drywall
- Ideal for interior and exterior applications
- Heavy duty - for use in high traffic areas
- Ideal for use with locksets with a projection of 3" (76 mm) or less



255W

Wall Stop

Certification: Meets ANSI A156.16 for L02021
 Base Diameter: 2-11/32" (60 mm)
 Projection: 3-11/16" (94 mm)
 Fasteners: One (1) #10 x 1" OPHWS, one (1) plastic anchor, one (1) 5/16-18 lead anchor, one (1) 5/16-18 x 2-1/2" threaded stud, one (1) 5/16-18 x 2-1/2" combo threaded stud
 Materials: Cast brass with black rubber bumper
 Finishes: US3, US4, US10, US10B, US15, US26, US26D
 Notes:

- For use on concrete walls
- Ideal for interior and exterior applications
- Heavy duty - for use in high traffic areas
- Ideal for use with locksets with a projection of 3" (76 mm) or less



256S

Manual Wall Stop & Holder

Certification: Meets ANSI A156.16 for L01341
 Base Diameter: 2-1/4" (57 mm)
 Base Projection: 3-3/4" (95 mm)
 Engaged Projection: 5-11/16" (145 mm)
 Keeper: 25/32" x 1-1/2" (20 mm x 38 mm)
 Materials: Cast brass with black rubber bumper
 Finishes: US3, US10, US10B, US15, US26, US26D
 Fasteners: Three (3) #10 x 1" OPHWS and three (3) plastic anchors
 Notes:

- For use on drywall
- Ideal for interior and exterior applications
- Heavy duty - for use in high traffic areas
- Unit functions as a stop, but can serve as a "Hold Open" when hook is manually engaged
- Ideal for use with locksets with a projection of 3" (76 mm) or less



TRIM & AUXILIARY



256W

Manual Wall Stop & Holder

Certification: Meets ANSI A156.16 for L01351
Base Diameter: 2-1/4" (57 mm)
Base Projection: 3-3/4" (95 mm)
Engaged Projection: 5-11/16" (145 mm)
Keper: 25/32" x 1-1/2" (20 mm x 38 mm)
Materials: Cast brass with black rubber bumper
Finishes: US3, US10, US10B, US15, US26, US26D
Fasteners: One (1) #10 x 1" OPHWS, one (1) plastic anchor, one (1) 5/16-18 lead anchor, one (1) 5/16-18 x 2-1/2" threaded stud, and one (1) 5/16-18 x 2-1/2" combo threaded stud

- Notes:
- For use on concrete walls
 - Ideal for interior and exterior applications
 - Heavy duty - for use in high traffic areas
 - Unit functions as a stop, but can serve as a "Hold Open" when hook is manually engaged
 - Ideal for use with locksets with a projection of 3" (76 mm) or less



260W

Angled Wall Stop

Certification: Meets ANSI A156.16 for L02201
Projection: 3-21/32" (93 mm)
Materials: Cast brass with black rubber bumper
Finishes: US26D
Base: 2-3/16" wide x 2-15/16" tall (56 mm x 75 mm)
Fasteners: Three (3) #14 x 1-1/2" FPHWS, three (3) 1/4-20 x 3/4" FPHMS, three (3) plastic anchors, and three (3) 1/4-20 lead anchors

- Notes:
- For use with drywall or concrete walls
 - Sloping design resists vandalism
 - Ideal for use with locksets with a projection of 3" (76 mm) or less



324W

Light Duty Wall Bumper

Certification: Meets ANSI A156.16 for L0203
Base Diameter: 1-1/4" (32 mm)
Projection: 3-1/4" (83 mm)
Tip Diameter: 5/8" (16 mm)
Materials: Cast brass, bronze with white rubber tip
Finishes: US3, US4, US5, US10, US10B, US15, US15A, US19, US26, US26D
Fastener: #10 x 7/8" wood thread

- Notes:
- Replaceable rubber tip available
 - Hex shape near the tip allows usage of a wrench for easier installation





326W

Automatic Wall Stop & Holder

- Certification: Meets ANSI A156.16 for L0129
- Holder Base: 2-13/32" x 2-25/32" (61 mm x 71 mm)
- Holder Projection: 2-5/16" (59 mm)
- Engaged Projection: 3-5/8" (92 mm)
- Strike Base: 1" x 2-1/16" (25 mm x 52 mm)
- Strike Projection: 2" (51 mm)
- Keeper: 1" x 2" (25 mm x 51 mm)
- Materials: Cast brass
- Finishes: US3, US10, US10B, US26, US26D
- Fasteners: Five (5) #10 x 1" OPHWS, three (3) 10-24 x 1-1/4" FPHMS, and three (3) plastic anchors
- Notes:
 - For use with wood or metal doors
 - Holder is mounted on the door
 - Roller is spring loaded to seat on strike - heavy duty rubber pad dampens sound and shock
 - Ideal for use with locksets with a projection of 3" (76 mm) or less



327W

Automatic Wall Stop & Holder

- Certification: Meets ANSI A156.16 for L11291
- Holder Base: 3-1/16" x 3-1/2" (78 mm x 89 mm)
- Holder Projection: 1-15/16" (49 mm)
- Engaged Projection: 3-1/2" (89 mm)
- Strike Diameter: 2-3/8" (60 mm)
- Strike Projection: 3-1/16" (78 mm)
- Materials: Cast brass
- Finishes: US3, US4, US10, US10B, US26, US26D
- Fasteners: Three (3) #14 x 1-1/2" FPHWS, three (3) 1/4-20 x 3/4" FPHMS, four (4) 12-24 x 1" TPHMS, four (4) #12 x 1" TPHWS, and three (3) 1/4-20 lead anchors
- Notes:
 - For use with wood or metal doors
 - For use with drywall or concrete walls
 - Roller is spring loaded to seat on strike - heavy duty rubber pad dampens sound and shock
 - Strike is adjustable 45° left or right
 - Holder has vertical adjustment once mounted on the door
 - Ideal for use with locksets with a projection of 3" (76 mm) or less
 - For doors up to 500 lbs



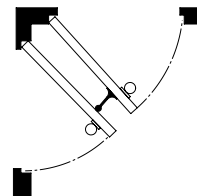
TRIM & AUXILIARY



271W

Roller Bumper

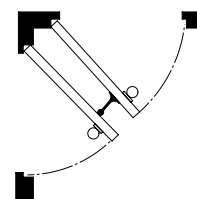
- Certification: Meets ANSI A156.16 for L02191
Base Diameter: 2" (51 mm)
Projection: 4-1/2" (114 mm)
Materials: Cast brass with grey rubber roller
Finishes: US3, US10, US10B, US26, US26D
Fasteners: Three (3) #10 x 1" FPHWS and three (3) plastic anchors
Notes:
 - For use when two doors swing into each other at right angles (back to back)
 - Prevents damage to the door and door hardware



272W

Roller Bumper

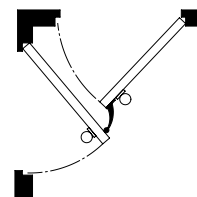
- Certification: Meets ANSI A156.16 for L02191
Base: 2" (51 mm) diameter
Projection: 6-1/4" (159 mm)
Materials: Cast brass with grey rubber roller
Finishes: US3, US10, US10B, US26, US26D
Fasteners: Three (3) #10 x 1" FPHWS, and three (3) plastic anchors
Notes:
 - For use when two doors swing into each other at right angles (back to back)
 - Prevents damage to the door and door hardware



273W

Curved Roller Bumper

- Certification: Meets ANSI A156.16 for L12211
Projection: 2-21/32" (67 mm)
Materials: Cast brass with grey rubber roller
Finishes: US3, US4, US10, US10B, US26, US26D
Fasteners: Three (3) #10 x 1" FPHWS and three (3) plastic anchors
Notes:
 - Used when two doors swing into each other at odd angles
 - Prevents damage to the door and door hardware





241F | BL241F

Dome Stop - Low

Certification: Meets ANSI A156.16 for L02141
 Base Diameter: 1-11/16" (43 mm)
 Base Thickness: 1/8" (3.2 mm)
 Overall Height: 1" (25 mm)
 Materials: Cast brass with grey rubber bumper
 Finishes: US3, US4, US5, US9, US10, US10B, US15, US15A, US19, US26, US26D
 Fasteners: One (1) #14 x 1-1/2" FPHWS, one (1) 1/4-20 x 3/4" FPHMS, one (1) 1/4-20 lead anchor, and one (1) plastic anchor

- Notes:
- To be used independently or in conjunction with 246B
 - For use when no threshold is used (door not undercut)
 - For use with wood or concrete floors
 - BL241F is 241F case quantity 50



242F

Dome Stop - Universal

Certification: Meets ANSI A156.16 for L0216
 Base Diameter: 1-11/16" (43 mm)
 Base Thickness: 7/32" (5.5 mm)
 Overall Height: 1-5/8 (41 mm)
 Materials: Brass with grey rubber bumper
 Finishes: US3, US4, US10B, US15, US26, US26D
 Fasteners: One (1) #14 x 1-1/2" FPHWS, one (1) 1/4-20 x 3/4" FPHMS, one (1) 1/4-20 lead anchor, and one (1) plastic anchor

- Notes:
- For use with wood or concrete floors



243F | BL243F

Dome Stop - High

Certification: Meets ANSI A156.16 for L02161
 Base Diameter: 1-11/16" (43 mm)
 Base Thickness: 7/16" (11 mm)
 Overall Height: 1-9/32" (33 mm)
 Materials: Cast brass with grey rubber bumper
 Finishes: US3, US4, US5, US9, US10, US10B, US15, US15A, US19, US26, US26D
 Fasteners: One (1) #14 x 1-1/2" FPHWS, one (1) 1/4-20 x 1-1/4" FPHMS, one (1) 1/4-20 lead anchor, and one (1) plastic anchor

- Notes:
- For use with thresholds or undercut doors
 - For use with wood or concrete floors
 - BL243F is 243F case quantity 50



244F

Cast Floor Stop

Base: 1-3/4" x 4" (45 mm x 102 mm)
 Base Thickness: 5/32" (4 mm)
 Overall Height: 1" (25 mm)
 Materials: Cast brass with grey rubber bumper
 Finishes: US3, US4, US10, US10B, US26, US26D
 Fasteners: Two (2) #14 x 1-1/2" FPHWS, two (2) 1/4-20 x 3/4" FPHMS, two (2) 1/4-20 lead anchor, and two (2) plastic anchor

- Notes:
- Heavy duty - for use in high traffic areas
 - For use when no thresholds are used (door not undercut)
 - For use with wood or concrete floors





TRIM & AUXILIARY



245F

Cast Floor Stop

- Base: 1-3/4" x 4" (45 mm x 102 mm)
Base Thickness: 1/2" (13 mm)
Overall Height: 1-5/16" (33 mm)
Materials: Cast brass with grey rubber bumper
Finishes: US3, US4, US10, US10B, US26, US26D
Fasteners: Two (2) #14 x 1-1/2" FPHWS, two (2) 1/4-20 x 1-1/4" FPHMS, two (2) 1/4-20 lead anchor, and two (2) plastic anchor
- Notes:
- Heavy duty - for use in high traffic areas
 - For use with thresholds and undercut doors
 - For use on wood or concrete floors



246B

Dome Stop Riser Plate

- Diameter: 1-3/4" (45 mm)
Base Thickness: 3/8" (10 mm)
Fasteners: One (1) 1/4-20 x 1" FPHMS
Materials: Cast brass
Finishes: US3, US4, US10, US10B, US15, US15A, US19, US26, US26D
Notes: For use with 241F on undercut doors, doors with thresholds, and carpeted flooring



248F

Modern Style Universal Stop

- Base Diameter: 1-7/16" (37 mm)
Height: 1-1/2" (38 mm)
Materials: Brass with black rubber bumper
Finishes: US26D
Fasteners: One (1) #12 x 1-1/4" FPHWS, one (1) plastic anchor, one (1) 1/4-20 x 1" FPHMS, and one (1) 1/4-20 lead anchor



249F

L-Shaped Floor Stop

- Base: 1" x 2-1/2" x 7/32" thick (25 mm x 64 mm x 6 mm)
Base Thickness: 1/4" (6 mm)
Overall Height: 2-5/8" (67 mm)
Materials: Steel
Stop face: Resilient black rubber
Fasteners: Two (2) #14 x 1-1/2" FPHWS and two (2) plastic anchors
Notes: 1-1/2" (38 mm) max door to floor clearance





252F

Floor Stop

Certification: Meets ANSI A156.16 for L02131

Base: 1-9/16" x 2-1/2" (40 mm x 64 mm)

Overall Height: 2-11/16" (68 mm)

Materials: Cast brass with black rubber bumper

Finishes: US3, US10, US10B, US15, US15A, US19, US26, US26D

Fasteners: One (1) #14 x 1-1/2" FPHWS, one (1) 1/4-20 x 3/4" FPHMS, one (1) 5/16-18 lead anchor, one (1) 1/4-20 lead anchor, one (1) plastic anchor, one (1) 5/16-18 x 2-1/2" threaded stud, and one (1) 5/16-18 x 2-1/2" combo threaded stud

Notes:

- Heavy duty - for use in high traffic areas
- For use on wood or concrete floors
- 2" (51 mm) max door to floor clearance



257F

Floor Stop

Certifications: Meets ANSI A156.16 for L02131

Base: 1-9/16" x 2-15/32" (40 mm x 63 mm)

Overall Height: 2" (51 mm)

Materials: Cast brass with black rubber bumper

Finishes: US3, US10, US10B, US15, US15A, US19, US26, US26D

Fasteners: One (1) #14 x 1-1/2" FPHWS, one (1) 1/4-20 x 3/4" FPHMS, one (1) 5/16-18 lead anchor, one (1) 1/4-20 lead anchors, one (1) plastic anchor, one (1) 5/16-18 x 2-1/2" threaded stud, and one (1) 5/16-18 x 2-1/2" combo threaded stud

Notes:

- 1-3/8" (35 mm) max door to floor clearance
- Heavy duty - for use in high traffic areas
- For use on wood or concrete floors



258F

Floor Stop and Holder

Certifications: Meets ANSI A156.16 for L01371

Base: 1-9/16" x 2-15/32" (40 mm x 63 mm)

Height: 3" (76 mm)

Keeper: 1" x 2" (25 mm x 51 mm)

Materials: Cast brass with black rubber bumper

Finishes: US3, US10, US10B, US15, US26, US26D

Fasteners: Two (2) #10 x 1" FPHWS, one (1) 1/4-20 x 3/4" FPHMS, one (1) 5/16-18 lead anchor, one (1) 1/4-20 lead anchors, and one (1) 5/16-18 x 2-1/2" threaded stud

Notes:

- 1-3/8" (35 mm) max door to floor clearance
- Heavy duty - for use in high traffic areas
- For use on concrete floors
- Manual holder ideal for interior and exterior applications
- Unit functions as a stop, but can serve as a "Hold Open" when hook is manually engaged



TRIM & AUXILIARY



259F

Tri Base Floor Stop

- Base: 2-1/2" wide x 1-9/16" deep (64 mm x 40 mm)
Overall Height: 1-11/16" (43 mm)
Material: Cast brass with grey rubber bumper
Finishes: US3, US4, US10, US10B, US26, US26D
Fasteners: Three (3) #10 x 1-1/4" FPHWS, three (3) plastic anchors, three (3) 10-32 x 3/4" FPHMS, and three (3) 10-32 lead anchor
- Notes:
- 1/2" (13 mm) max door to floor clearance
 - Heavy duty - for use in high traffic areas
 - For use on wood or concrete floors



259H

Tri Base Floor Stop - Tall

- Base: 2-1/2" wide x 1-9/16" deep (64 mm x 40 mm)
Overall Height: 2-1/4" (57 mm)
Materials: Cast brass with grey rubber bumper
Finishes: US3, US4, US10, US10B, US26, US26D
Fasteners: Three (3) #10 x 1-1/4" FPHWS, three (3) plastic anchor, three (3) 10-32 x 3/4" FPHMS, and three (3) 10-32 lead anchors
- Notes:
- 1" (25 mm) max door to floor clearance
 - Heavy duty - for use in high traffic areas
 - For use on wood or concrete floors



267F

Cast Floor Stop

- Certifications: Meets ANSI A156.16 for L02131
Base Diameter: 2-1/4" (57 mm)
Overall Height: 3-1/8" (80 mm)
Materials: Cast brass with black rubber bumper
Finishes: US3, US10, US10B, US15, US15A, US19, US26, US26D
Fasteners: One (1) #10 x 1" OPHWS, one (1) plastic anchor, one (1) 5/16-18 lead anchor, one (1) 5/16-18 x 2-1/2" threaded stud, and one (1) 5/16-18 x 2-1/2" combo threaded stud
- Notes:
- 2-3/8" (60 mm) max door to floor clearance
 - Heavy duty - for use in high traffic areas
 - For use on concrete floors



267S

Cast Floor Stop

- Certifications: Meets ANSI A156.16 for L02121
Base Diameter: 2-1/4" (57 mm)
Overall Height: 3-1/8" (80 mm)
Materials: Cast brass with black rubber bumper
Finishes: US3, US10, US10B, US15, US15A, US19, US26, US26D
Fasteners: Three (3) #10 x 1" OPHWS and three (3) plastic anchors
- Notes:
- 2-3/8" (60 mm) max door to floor clearance
 - Heavy duty - for use in high traffic areas
 - For use on wood floors





268F

Cast Floor Stop and Holder

- Certifications: Meets ANSI A156.16 for L01371
- Base Diameter: 2-1/4" (57 mm)
- Height: 3-19/32" (91 mm)
- Keeper: 25/32" x 1-1/2" (20 mm x 38 mm)
- Materials: Cast brass with black rubber bumper
- Finishes: US3, US10, US10B, US15, US15A, US19, US26, US26D
- Fasteners: Three (3) #10 x 1" OPHWS, one (1) plastic anchor, one (1) 5/16-18 lead anchor, and one (1) 5/16-18 x 2-1/2" threaded stud
- Notes:
 - 2-1/2" (64 mm) max door to floor clearance
 - Heavy duty - for use in high traffic areas
 - For use on concrete floors
 - Manual holder ideal for interior and exterior applications
 - Unit functions as a stop, but can serve as a "Hold Open" when hook is manually engaged



268S

Cast Floor Stop and Holder

- Certifications: Meets ANSI A156.16 for L01361
- Base Diameter: 2-1/4" (57 mm)
- Height: 3-19/32" (91 mm)
- Keeper: 25/32" x 1-1/2" (20 mm x 38 mm)
- Materials: Cast brass with black rubber bumper
- Finishes: US3, US10, US10B, US15, US15A, US19, US26, US26D
- Fasteners: Five (5) #10 x 1" OPHWS and three (3) plastic anchors
- Notes:
 - 2-1/2" (64 mm) max door to floor clearance
 - Heavy duty - for use in high traffic areas
 - For use on wood floors
 - Manual holder ideal for interior and exterior applications
 - Unit functions as a stop, but can serve as a "Hold Open" when hook is manually engaged



269F

Heavy Duty Floor Stop

- Certifications: Exceeds the criteria set forth for a 300-pound impact test (Report #91-04-01646)
- Bumper Diameter: 2" (51 mm)
- Bumper Height: 1-1/2" (38 mm)
- Steel Bolt: 5/8 - 11 x 2-1/2" thread
- Materials: Black rubber (fire-resistant)
- Notes:
 - Designed for high vandalism areas
 - Ideal for prisons where floor stops are required
 - Grouted in concrete to eliminate exposed screws



TRIM & AUXILIARY



269T

Heavy Duty Floor Stop

Certifications:

Exceeds the criteria set forth for a 300-pound impact test (Report #91-04-01646)

Bumper Diameter:

2" (51 mm)

Bumper Height:

3-1/2" (89 mm)

Steel Bolt:

5/8 – 11 x 2-1/2" thread

Materials:

Black rubber (fire-resistant)

Notes:

- Designed for high vandalism areas
- Ideal for prisons where floor stops are required
- Grouted in concrete to eliminate exposed screws



326F

Automatic Floor Stop and Holder

Certifications:

Meets ANSI A156.16 for L01301

Holder Projection:

1-15/16" (49 mm)

Holder Base:

3-1/16" x 3-1/2" (78 mm x 89 mm)

Floor Strike:

2" x 4-3/32" (51 mm x 104 mm)

Strike Height:

1-1/4" (32 mm)

Max Door to Floor Clearance:

1/2" (13 mm) or less

Materials:

Brass

Finishes:

US3, US10, US10B, US26, US26D

Fasteners:

Three (3) #14 x 1-1/2" FPHWS, three (3) 1/4-20 x 3/4" FPHMS, three (3) 1/4-20 lead anchors, four (4) 12-24 x 1" TPHMS, and four (4) #12 x 1" TPHWS

Notes:

- For use on wood or metal doors and wood or concrete floors
- Ideal for heavy traffic situations that require frequent hold open
- Firm pull releases holding mechanism
- Holder has vertical adjustment once mounted on the door



327F

Automatic Floor Stop and Holder

Certifications:

Meets ANSI A156.16 for L01301

Holder Projection:

1-15/16" (49 mm)

Holder Base:

3-1/16" x 3-1/2" (78 mm x 89 mm)

Floor Strike:

2-3/16" x 4-1/8" (56 mm x 105 mm)

Strike Height:

1-3/4" (44 mm)

Max Door to Floor Clearance:

9/16" to 1-1/16" (14 mm to 27 mm)

Materials:

Brass

Finishes:

US3, US10, US10B, US26, US26D

Fasteners:

Three (3) #14 x 1-1/2" FPHWS, three (3) 1/4-20 x 3/4" FPHMS, three (3) 1/4-20 lead anchors, four (4) 12-24 x 1" TPHMS, and four (4) #12 x 1" TPHWS

Notes:

- For use on wood or metal doors and wood or concrete floors
- Ideal for heavy traffic situations that require frequent hold open
- Firm pull releases holding mechanism
- Holder has vertical adjustment once mounted on the door





328F

Automatic Floor Stop and Holder

Certifications: Meets ANSI A156.16 for L01301
 Holder Projection: 1-15/16" (49 mm)
 Holder Base: 3-1/16" x 3-1/2" (78 mm x 89 mm)
 Floor Strike: 2-3/16" x 4-1/8" (56 mm x 105 mm)
 Strike Height: 2-1/4" (57 mm)
 Max Door to Floor Clearance: 1-1/8" to 1-9/16" (29 mm to 40 mm)
 Materials: Brass
 Finishes: US3, US10, US10B, US26, US26D
 Fasteners: Three (3) #14 x 1-1/2" FPHWS, three (3) 1/4-20 x 3/4" FPHMS, three (3) 1/4-20 lead anchors, four (4) 12-24 x 1" TPHMS, and four (4) #12 x 1" TPHWS

- Notes:
- For use on wood or metal doors and wood or concrete floors
 - Ideal for heavy traffic situations that require frequent hold open
 - Firm pull releases holding mechanism
 - Holder has vertical adjustment once mounted on the door



329F

Automatic Floor Stop and Holder

Certifications: Meets ANSI A156.16 for L01301
 Holder Projection: 1-15/16" (49 mm)
 Holder Base: 3-1/16" x 3-1/2" (78 mm x 89 mm)
 Floor Strike: 2-3/16" x 4-1/8" (56 mm x 105 mm)
 Strike Height: 2-3/4" (70 mm)
 Max Door to Floor Clearance: 1-5/8" to 2-1/16" (41 mm to 52 mm)
 Materials: Brass
 Finishes: US3, US10, US10B, US26, US26D
 Fasteners: Three (3) #14 x 1-1/2" FPHWS, three (3) 1/4-20 x 3/4" FPHMS, three (3) 1/4-20 lead anchors, four (4) 12-24 x 1" TPHMS, and four (4) #12 x 1" TPHWS

- Notes:
- For use on wood or metal doors and wood or concrete floors
 - Ideal for heavy traffic situations that require frequent hold open
 - Firm pull releases holding mechanism
 - Holder has vertical adjustment once mounted on the door



TRIM & AUXILIARY



270C

Kick Down Door Holder

- Certifications: Meets ANSI A156.16 for L71382
Base: 1-7/16" x 2-1/8" (37 mm x 54 mm)
Arm: 3-13/16" (97 mm)
Materials: Cast iron with rubber tip
Finishes: S1 - Sprayed Aluminum, S2 - Sprayed Brass, S3 - Sprayed Bronze
Fasteners: Four (4) #6 x 3/4" OPH tapping screws
Notes:
 - Provides simple hold and release with a touch of the foot
 - 2-1/4" (57 mm) max door to floor clearance



270D

Kick Down Door Holder

- Certifications: Meets ANSI A156.16 for L01381
Base: 1-19/32" x 1-25/32" (41 mm x 45 mm)
Arm: 3-1/2" (89 mm)
Materials: Cast brass with rubber tip
Finishes: US3, US10, US10B, US15, US15A, US19, US26, US26D
Fasteners: Three (3) #6 x 3/4" OPHWS
Notes:
 - Provides simple hold and release with a touch of the foot
 - 2-1/4" (57 mm) max door to floor clearance



270R

Replacement Rubber Tip

- Materials: Rubber
Notes:
 - For use with 270D and 271D
 - Sold in packs of 10



271D

Kick Down Door Holder

- Certifications: Meets ANSI A156.16 for L01381
Base: 1-19/32" x 1-25/32" (41 mm x 45 mm)
Arm: 4-7/16" (87 mm)
Materials: Cast brass with rubber tip
Finishes: US3, US10, US10B, US26, US26D
Fasteners: Three (3) #6 x 3/4" OPHWS
Notes:
 - Provides simple hold and release with a touch of the foot
 - 3-1/4" (83 mm) max door to floor clearance





275D | 276D

Surface Bolt

Certifications: Meets ANSI A156.16 for L04161
 Overall Projection: 1-3/8" (35 mm)
 Overall Width: 2-1/32" (52 mm)
 Bar: 3/4" x 1/4" (19 mm x 6 mm) thick
 Length: 275D - 8" (203 mm)
 276D - 12" (305 mm)
 Throw: 1" (25 mm)
 Materials: Steel
 Finishes: US3, US10, US10B, US26D
 Fasteners: Eight (8) #10 x 1-1/4" FPHWS and eight (8) 10-24 x 1" undercut FPHMS

- Notes:
- Mortise bottom strike and universal top strike included
 - Strong tension springs prevent creep
 - UL listed for use on inactive leaf of a pair of 3-HR labeled fire doors



278D

Surface Bolt

Bolt Length: 6" (152 mm)
 Bolt Width: 7/16" (11 mm)
 Bolt Throw: 31/32" (25 mm)
 Base Width: 19/32" (15 mm)
 Knob Diameter: 1/2" (13 mm)
 Projection: 3/4" (19 mm)
 Materials: Brass
 Finishes: US3, US10B, US26D
 Fasteners: Four (4) #5 x 5/8" FPHWS

- Notes:
- Mortise and universal strikes included
 - Concealed screw design enhances appearance and security
 - Permanent stop prevents bolt disengagement from track



279D

Surface Bolt

Length: 4" (102 mm)
 Width: 1-11/16" (43 mm)
 Throw: 3/8" (10 mm)
 Half Round Bolt Size: 5/8" (16 mm)
 Projection: 1-1/4" (32 mm)
 Knob Diameter: 29/32" (23 mm)
 Materials: Brass
 Finishes: US3, US10, US10B, US26D
 Fasteners: Twelve (12) #6 x 3/4" FPHWS

- Notes: Mortise and universal strikes included



TRIM & AUXILIARY



280X

Dust Proof Strike

Certifications:	Meets ANSI A156.16 for L04021
Face Plate:	1-7/16" x 2-29/32" x 1/8" depth (37 mm x 74 mm x 3 mm)
Barrel Diameter:	1" (25 mm)
Barrel Depth:	2-3/16" (56 mm)
Plunger Diameter:	3/4" (19 mm)
Materials:	Brass
Finishes:	US3, US4, US9, US10, US10B, US15, US15A, US19, US26, US26D
Fasteners:	Two (2) #8 x 1" FPHWS, two (2) plastic anchors, and spanner wrench
Notes:	<ul style="list-style-type: none"> • Packed unassembled with plate, strike, fasteners, and spanner wrench • May be used with carpet or threshold application by omitting face plate • Designed for use with the bottom bolt of a flushbolt set • Spring loaded plunger returns to floor or threshold level anytime flushbolt is retracted, eliminating the need to clean out the bottom strike



281D

Slide Flush Bolt

Certifications:	Meets ANSI A156.16 for L04201
Faceplate:	3/4" x 6" (19 mm x 153 mm)
Bolt Diameter:	1/2" (13 mm)
Bolt Throw:	1" (25 mm)
Bolt Backset:	7/16" (11 mm)
Strike:	7/8" x 1-3/4" (22 mm x 45 mm)
Materials:	Brass, bronze faceplate with steel components
Finishes:	US3, US4, US5, US10, US10B, US15, US15A, US19, US26, US26D
Fasteners:	Four (4) #6 x 3/4" FPHWS
Notes:	Double action spring design provides automatic holding of bolt in projected or retracted position



282D

Manual Flush Bolt

Certifications:	<ul style="list-style-type: none"> • Fits ANSI A115 door and frame prep • Meets ANSI A156.16 for L14251
Face Plate:	1" x 6-3/4" (25 mm x 172 mm)
Bolt Head:	1/2" (13 mm) square
Bolt Throw:	3/4" (19 mm)
Standard Rod Length:	12" (305 mm) (center of face to corner of door)
Bolt Backset:	3/4" (19 mm)
Mortise Strike:	15/16" x 2-1/4" (24 mm x 57 mm)
Materials:	Brass faceplate with steel components
Finishes:	US3, US4, US5, US9, US10, US10B, US15, US15A, US19, US26, US26D
Fasteners:	Eight (8) #8 x 3/4" combo screws; eight (8) #8 x 1-1/2" combo screws
Notes:	<ul style="list-style-type: none"> • For use on hollow metal/fire rated doors • Non-handed • Bolt head rods are adjustable • Sold in increments of two. • 3-Hr fire rating for metal doors up to 4 feet wide by 10 feet tall. • 282S strike plate bag and 282P bolt head available • Specify 282R for optional rod length of 18" (457 mm), 25" (635 mm), or 30" (762 mm) (bolt head not included)





283D

Manual Flush Bolt

- Certifications: Meets ANSI A156.16 for L14261
 Face Plate: 1" x 6-25/32" (25 mm x 172 mm)
 Bolt Head: 1/2" (13 mm) square
 Bolt Throw: 3/4" (19 mm)
 Bolt Backset: 3/4" (19 mm)
 Mortise Strike: 15/16" x 2-1/4" (24 mm x 57 mm)
 Materials: Brass faceplate with steel components
 Finishes: US3, US4, US5, US9, US10, US10B, US15, US15A, US19, US26, US26D
 Fasteners: Eight (8) #8 x 3/4" combo screws and eight (8) #8 x 1-1/2" combo screws
 Notes:
 - For use on wood composite/ fire rated doors
 - Non-handed
 - Bolt head rods are adjustable
 - 1-1/2 hour fire rating for wood doors up to 4 feet wide by 10 feet tall



291D

Automatic Flush Bolt Set for Wood Covered Composite Doors

- Certifications: B, C, D, and E Label
 ANSI A156.3 Type #25
 Face Plate: 1" x 8-1/2" (25 mm x 216 mm)
 Bolt Head: 1/2" (13 mm) square
 Bolt Throw: 3/4" (19 mm)
 Bolt Backset: 3/4" (19 mm)
 Mortise Strike: 15/16" x 2-1/4" (24 mm x 57 mm)
 Materials: Stainless steel and brass with steel components
 Finishes: US3, US4, US10, US10B, US15, US32, US32D
 Fasteners: Six (6) #8 x 1" combo screws, three (3) #10 x 1" SMS, and two (2) plastic anchors
 Notes:
 - Thermal lock automatically locks inactive door under high fire/heat conditions
 - 280X dust proof strikes are recommended for use with these sets
 - Used in pairs at top and bottom of inactive door
 - Fully automatic – bolts retract when active door is opened; bolts extend when active door is closed
 - Non-handed
 - Bolt head rods are adjustable
 - 1-1/2 hour fire rating for wood doors up to 4 feet wide by 9 feet tall





TRIM & AUXILIARY

292D

Automatic Flush Bolt Set for Metal Doors

Certifications: A, B, C, D, and E Label

ANSI A156.3 Type #25

Face Plate: 1" x 6-3/4" (27 mm x 172 mm)

Bolt Head: 1/2" (13 mm) square

Bolt Throw: 3/4" (19 mm)

Bolt Backset: 3/4" (19 mm)

Mortise Strike: 15/16" x 2-1/4" (24 mm x 57 mm)

Materials: Stainless steel and brass with steel components

Finishes: US3, US4, US10, US10B, US15, US32, US32D

Fasteners: Ten (10) #8 x 1" combo screws

Notes:

- Thermal lock automatically locks inactive door under high fire/heat conditions
- 280X dust proof strikes are recommended for use with these sets
- Used in pairs at top and bottom of inactive door
- Fully automatic – bolts retract when active door is opened; bolts extend when active door is closed
- Non-handed
- Bolt head rods are adjustable
- 3-hour fire rating for metal doors up to 4 feet wide by 9 feet tall



293D

Self Latching Flush Bolt Set for Inactive Metal Doors

Certifications: A, B, C, D, and E Label

ANSI A156.3 Type #27

Face Plate: 1" x 6-3/4" (25 mm x 172 mm)

Bolt Head: 1/2" (13 mm) square

Bolt Throw: 3/4" (19 mm)

Bolt Backset: 3/4" (19 mm)

T- Strike: 1-1/8" x 2-3/4" (28 mm x 70 mm)

Materials: Stainless steel and brass with steel components

Finishes: US3, US4, US10, US10B, US15, US32, US32D

Fasteners: Eight (8) #8 x 1" combo screws

Notes:

- Thermal lock automatically locks inactive door under high fire/heat conditions
- 280X dust proof strikes are recommended for use with these sets
- Consists of one 292S and one 293S for two point latching
- Inactive door remains latched until the active door is opened, releasing the automatic bottom bolt - Top bolt can be manually released by pressing plunger - Inactive door will relatch automatically when closed
- Non-handed
- Bolt head rods are adjustable
- 3-hour fire rating for metal doors up to 4 feet wide by 9 feet tall





294D

Self Latching Flush Bolt Set for Inactive Wood Covered Composite Doors

- Certifications: B, C, D, and E Label
ANSI A156.3 Type #27
- Face Plate: 1" x 8-1/2" (25 mm x 216 mm)
- Bolt Head: 1/2" (13 mm) diameter
- Bolt Throw: 3/4" (19 mm)
- Bolt Backset: 3/4" (19 mm)
- T- Strike: 1-1/8" x 2-3/4" (28 mm x 70 mm)
- Materials: Stainless steel and brass with steel components
- Finishes: US3, US4, US10, US10B, US15, US32, US32D
- Fasteners: Four (4) #8 x 1" combo screws, three (3) #10 x 1" SMS, and two (2) plastic anchors
- Notes:
- Thermal lock automatically locks inactive door under high fire/heat conditions
 - 280X dust proof strikes are recommended for use with these sets
 - May be used on doors 4 ft. wide and 9 ft. high
 - Consists of one 292S and one 293S for two point latching
 - Inactive door remains latched until the active door is opened, releasing the automatic bottom bolt - Top bolt can be manually released - Inactive door will relatch automatically when closed
 - Non-handed
 - Bolt head rods are adjustable
 - 1-1/2 hour fire rating for wood doors up to 4 feet wide by 9 feet tall



295M

Automatic Flush Bolt Set with Fire Bolt for Metal Doors

- Certifications: ANSI/BHMA 156.3 Type #25
- Face Plate: 1" x 6-3/4" (25 mm x 172 mm)
- Bolt Head: 1/2" (13 mm) diameter
- Bolt Throw: 3/4" (19 mm)
- Bolt Backset: 3/4" (19 mm)
- Mortise Strike: 15/16" x 2-1/4" (24 mm x 57 mm)
- Materials: Stainless steel and brass with steel components
- Finishes: US3, US4, US10, US10B, US15, US32, US32D
- Fasteners: Ten (10) #8 x 1" combo screws
- Notes:
- Fire bolt is activated at 230° Fahrenheit projecting into active door locking leaves together - This combination eliminates the bottom flushbolt and eliminates floor preparation
 - Fully automatic – Bolt retracts when active door is opened - Bolt extends when active door is closed
 - Non-handed
 - Bolt head rods are adjustable
 - 3-hour fire rating for metal doors up to 4 feet wide by 9 feet tall





TRIM & AUXILIARY



295W

Automatic Flush Bolt Set with Fire Bolt for Wood Doors

- Certifications: ANSI/BHMA 156.3 Type #25
Face Plate: 1" x 8-1/2" (25 mm x 216 mm)
Bolt Head: 1/2" (13 mm) diameter
Bolt Throw: 3/4" (19 mm)
Bolt Backset: 3/4" (19 mm)
Mortise Strike: 15/16" x 2-1/4" (24 mm x 57 mm)
Materials: Stainless steel and brass with steel components
Finishes: US3, US4, US10, US10B, US15, US32, US32D
Fasteners: Six (6) #8 x 1" combo screws, three (3) #10 x 1" SMS, and two (2) plastic anchors
- Notes:
- Fire bolt is activated at 230° Fahrenheit projecting into active door locking leaves together - This combination eliminates the bottom flushbolt and eliminates floor preparation
 - Fully automatic – Bolt retracts when active door is opened - Bolt extends when active door is closed
 - Non-handed
 - Bolt head rods are adjustable
 - 20-min fire rating for wood doors up to 4 feet wide by 9 feet tall



296W

Automatic Flush Bolt Set for Wood Doors

- Certifications: ANSI/BHMA 156.3 Type #25
Face Plate: 1-1/8" x 2-1/4" (29 mm x 57 mm)
Bolt Head: 1/2" (13 mm) diameter
Bolt Throw: 3/4" (19 mm)
Bolt Backset: 1-1/2" (39 mm)
Materials: Stainless steel and brass with steel components
Finishes: US3, US4, US10, US10B, US15, US32, US32D
Fasteners: Four (4) #8 x 1" SMS, two (2) #8 x 3/4" combo screws, two (2) plastic anchors
- Notes:
- Non-handed
 - ADA compliant
 - Ideal for wood veneer doors
 - Only two (2) 1-1/8" diameter holes needed for easier door preparation
 - Opening active door retracts top and bottom bolts
 - Smaller profile adds stability to the door
 - 1-1/2 hour fire rating for doors up to 4 feet wide by 9 feet tall





297C

Carry Bar

Certifications:
Projection:
Base:
Materials:
Finishes:
Fasteners:
Notes:

ANSI/BHMA A156.3 Type #27
25/32" (20 mm)
1-3/4" x 2-1/4" (45 mm x 57 mm)
Brass and stainless steel
USP, US3, US10, US10B, US15, US32, US32D
Two (2) 12-24 x 3/4" PPHMS w/ sex nuts

- Used when it is possible for the inactive door to be opened before the active door
- For use on pairs of doors with astragals
- For use in conjunction with a 297D or 298D coordinator
- Prevents damage to the doors and other hardware
- Carry bar is not required when the inactive door is equipped with flush bolts
- Non-handed



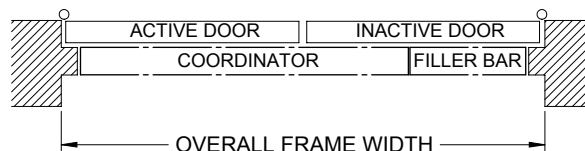
297D

Coordinating Device

Certifications:
Base:
Materials:
Finishes:
Maximum Astragal Overlap:
Stop Height:
Fasteners:

ANSI/BHMA A156.3 Type #21A
1-3/4" x 2-1/4" (45 mm x 57 mm)
Steel
Black Prime Coat
1" (25 mm)
5/8" (16 mm)
Seven (7) 12-24 x 1-1/4" TPHMS and four (4) #8 x 1" FPH combo screws

- For use with overall frame widths 60" (1524 mm), 72" (1829 mm), or 96" (2438 mm), consult Hager customer service if overall frame width is different than our stock sizes
- Coordinating device is 52" (1321 mm) long for all stock sizes 60" (1524 mm), 72" (1829 mm), or 96" (2438 mm)
- Filler bar is cut to length in field to match customers overall frame width
- Non-handed
- Designed for use on pairs of doors when one door needs to close before the other
- Active door lever, located nearest to the active stop, holds the active door open until the trigger mechanism is released by the closing of the inactive leaf
- Coordinator may not span the entire length of stop, 297F filler bar may be needed to fill up the extra space
- Compatible with flushbolts
- Optional mounting brackets 297M and 297N may be used when mounting other stop applied hardware
- For use with active door widths 30" (762 mm) – 48" (1219 mm)
- If active and inactive doors are unequal in length, consult Hager customer service for proper sizing





TRIM & AUXILIARY



297F

Filler Bar

Stop Height: 5/8" (16 mm)
 Length: 18-5/8" (473 mm) (for jamb opening widths 52" – 72");
 42-5/8" (1082 mm) (for jamb opening widths 73" – 96")
 Notes: For use with 297D coordinator



297M

Mounting Brackets

Jamb Depth: 4-3/4" (121 mm)
 Stop Height: 5/8" (16 mm)
 Finishes: Black prime coat
 Fasteners: Four (4) 12-24 x 2" FPHMS and four (4) 1/4-20 x 1/2" FPHMS
 Notes:

- For use with 297D coordinator
- For soffit width 7/8" - 2-1/4" (22 mm - 57 mm)
- Allows stop mounted hardware to be properly installed without damaging the coordinator, such as a parallel arm closer or a non-fire rated surface vertical rod strike



297N

Mounting Brackets

Jamb Depth: 4-1/4" (108 mm)
 Stop Height: 5/8" (16 mm)
 Finishes: Black prime coat
 Fasteners: Four (4) 12-24 x 2" FPHMS and four (4) 1/4-20 x 1/2" FPHMS
 Notes:

- For use with 297D coordinator
- For soffit width greater than 2-1/4" (57 mm)
- Allows stop mounted hardware to be properly installed without damaging the coordinator, such as a parallel arm closer or a non-fire rated surface vertical rod strike



298D

Gravity Coordinator

Certifications: ANSI A156.3 Type #21B
 Base: 5-1/2" x 1-1/8" (140 mm x 29 mm)
 Projection: 7" (178 mm)
 Materials: Brass with rubber roller and nylon cam roller
 Finishes: US3, US10, US10B, US26D
 Fasteners: Two (2) #12 x 1" OPHWS, two (2) #6 x 3/4" FPHWS, two (2) #8 x 3/4" TPHWS, and one (1) #6 x 3/4" FPHWS
 Notes:

- Non-handed
- Do not use 298D coordinator in conjunction with flushbolts. Use 297D when using flushbolts
- Gravity arm and door bracket are adjustable on the job for ease of installation
- For use on pairs of doors with astragal on active door up to 4' (1219 mm) wide or with astragal on inactive door up to 3'-4" (1016 mm) wide or with astragal on both doors up to 2'-10" (864 mm) wide
- Minimum 3" (76 mm) header required
- Maximum astragal overlap - 7/8" (22 mm)





311H | 311L
Push/Pull Latch

Certifications:

Push & Pull levers:

Escutcheons:

Projection:

Bolt Throw:

Bolt Diameter:

Backset:

Strike (TEE) - standard:

Strike (ASA) - standard:

Door thickness:

Materials:

Finishes:

Notes:

ANSI A156.2 Closest Equivalent

(Bored Latch - Series 4000 - Grade 2)

1-15/16" x 4-1/2" (49 mm x 114 mm)

3-1/16" x 5" (78 mm x 127 mm)

2-5/8" (67 mm)

1/2" (13 mm)

3/4" (19 mm)

- 2-3/4" (70 mm) - Standard

- 5" (127 mm) - Optional

1-1/8" x 2-3/4" (29 mm x 70 mm)

1-1/4" x 4-7/8" (32 mm x 124 mm)

1-3/4" (45 mm)

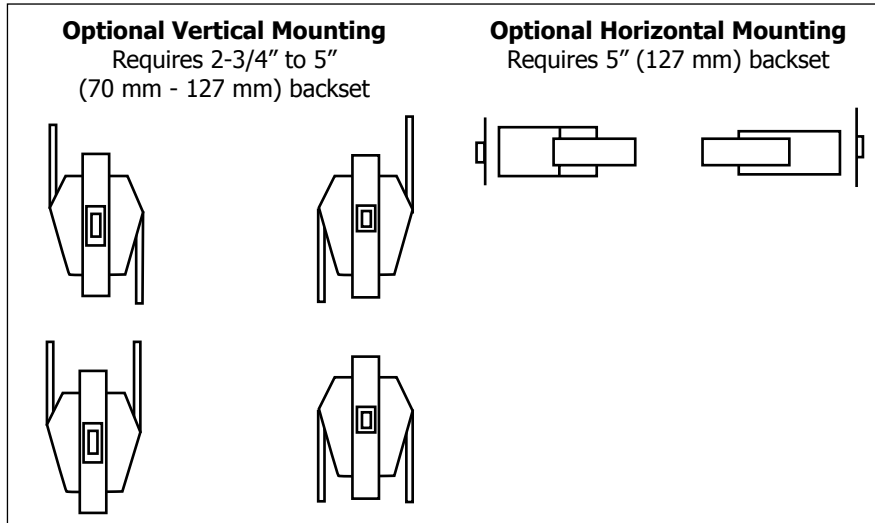
Zinc and stainless steel

US26, US26D, US32, US32D

- Non-handed

- Engraving is optional

- 311L is same as 311H but for use on lead lined doors



318D
Roller Latch with Tee Strike

Certifications:

Roller Faceplate:

Strike:

Strike Gauge:

Materials:

Finishes:

Fasteners:

Notes:

Meets ANSI A156.16 for E09091

1" x 3-3/8" (25 mm x 86 mm)

1-1/8" x 2-3/4" (29 mm x 70 mm)

0.063" (1.5 mm)

Brass

US3, US4, US10, US10B, US15, US15A, US19, US26, US26D

Two (2) #10 x 1-1/2" FPHWS, two (2) #8 x 1" FPHWS, and two (2) 8-32 x 3/4" FPHMS

- Adjustable spring tension with nylon roller

- Projection of roller is easily adjusted using screws on faceplate

- Max projection of the roller is 3/8" (9.5 mm) allowing for variance in door and frame clearance





TRIM & AUXILIARY



318S

Roller Latch with Stop

- Certifications: Meets ANSI A156.16 for E0911
Roller Faceplate: 1-7/16" wide x 4-7/16" high x 11/16" angle (37 mm x 111 mm x 18 mm)
Strike: 1-1/8" x 2-1/4" (29 mm x 57 mm)
Strike Gauge: 0.063" (1.5 mm)
Materials: Brass
Finishes: US3, US4, US10, US10B, US15, US26, US26D
Fasteners: Two (2) #10 x 1-1/2" FPHWS and two (2) 8-32 x 3/4" FPHMS
Notes:
- Adjustable spring tension with nylon roller
 - Projection of roller is easily adjusted using screws on faceplate
 - Max projection of the roller is 3/8" (9.5 mm) allowing for variance in door and frame clearance



320R

Roller Catch with Tee Strike

- Certifications: Meets ANSI A156.16 for E0910
Roller Faceplate: 1-1/8" x 2-1/4" (29 mm x 57 mm)
Strike: 1-1/4" x 2-3/4" x 1/16" thick (32 mm x 70 mm x 1.5 mm)
Materials: Brass
Finishes: US3, US4, US10, US10B, US15, US26, US26D
Fasteners: Four (4) #8 x 1" FPHWS
Notes:
- Adjustable spring tension with nylon roller
 - Projection of roller is adjusted by turning knurled knob on back of the latch
 - Max projection of the roller is 7/16" (11 mm) allowing for variance in door and frame clearance
 - For use with wood door and frame



321R

Adjustable Ball Catch with Strike

- Roller Faceplate: 1" x 2-1/8" (25 mm x 54 mm)
Strike: 1-1/2" x 2-1/8" (38 mm x 54 mm)
Strike Gauge: 0.050" (1.3 mm)
Materials: Brass with steel ball
Finishes: US3, US4, US10, US10B, US15, US15A, US19, US26D
Fasteners: Four (4) #6 FPHWS
Notes:
- Adjustable threaded barrel compensates for various door clearances
 - Adjustable spring tension
 - For use with wood door and frame



340D

Latch Protection Plate

- Size: 3" x 11" (76 mm x 279 mm)
Materials: 12GA steel, stainless steel
Finishes: US2C, US32D
Fasteners: Two (2) 5/16-18 x 1-1/2" carriage bolts with sex nuts
Notes:
- For use with 1-3/4" (45 mm) doors
 - Non-handed
 - Frame pin prevents prying of door
 - For use with most mortise locks
 - For use with cylindrical locksets with a 3-3/4" (95 mm) backset or greater





341D

Latch Protection Plate with Lock Cut Out

- Size: 3" x 11" (76 mm x 279 mm)
 Materials: 12GA steel, stainless steel
 Finishes: US2C, US32D
 Fasteners: Two (2) 5/16-18 x 1-1/2" carriage bolts with sex nuts
 Notes:
 - For use with 1-3/4" (45 mm) doors
 - Non-handed
 - Frame pin prevents prying of door
 - For use with cylindrical locksets with a 2-3/4" (70 mm) backset



345D

Latch Protection Plate

- Size: 1-5/8" x 10" (41 mm x 254 mm)
 Materials: 12GA steel, stainless steel
 Finishes: US2C, US32D
 Fasteners: Two (2) 5/16-18 x 1-1/2" carriage bolts with sex nuts
 Notes:
 - For use with 1-3/4" (45 mm) doors
 - Non-handed
 - For use with cylindrical locksets



1442

Roller Latch with Full Lip Strike

- Certifications: Meets ANSI A156.16 for E09091
 Roller Faceplate: 1" x 3-3/8" (25 mm x 86 mm)
 Strike: 1-11/16" x 2-1/4" (43 mm x 57 mm)
 Strike Gauge: 5/32" (4 mm)
 Materials: Brass
 Finishes: US3, US4, US10, US10B, US15, US15A, US19, US26, US26D
 Fasteners: Two (2) #10 x 1-1/2" FPHWS, two (2) #8 x 1" FPHWS, and two (2) 8-32 x 3/4" FPHMS
 Notes:
 - Adjustable spring tension with nylon roller
 - Projection of roller is easily adjusted using screws on faceplate
 - Max projection of the roller is 3/8" (9.5 mm) allowing for variance in door and frame clearance



1443

Roller Latch with ASA Strike

- Certifications: Meets ANSI A156.16 for E09101
 Roller Faceplate: 1" x 3-3/8" (25 mm x 86 mm)
 Strike: 1-1/4" x 4-7/8" (32 mm x 124 mm)
 Strike Gauge: 0.090" (2.3 mm)
 Materials: Brass
 Finishes: US3, US4, US10, US10B, US15, US15A, US19, US26, US26D
 Fasteners: Two (2) #10 x 1-1/2" FPHWS, two (2) #12 x 3/4" FPHWS, and two (2) 12-24 x 1/2" FPHMS
 Notes:
 - Adjustable spring tension with nylon roller
 - Projection of roller is easily adjusted using screws on faceplate
 - Max projection of the roller is 3/8" (9.5 mm) allowing for variance in door and frame clearance





TRIM & AUXILIARY



901P

Coat Hook - Short Single

Diameter: 1" (25 mm)
 Projection: 1-1/4" (32 mm)
 Materials: Brass, bronze
 Finishes: US3, US26D
 Fasteners: #14 x 1-1/4" wood thread
 Notes: Concealed mounting



937P

Coat Hook

Projections:

- 3-3/4" (95 mm) top hook
- 2-1/2" (63 mm) bottom hook

 Materials: Brass, bronze
 Finishes: US3, US26D



902P

Coat Hook - Long Single

Diameter: 1" (25 mm)
 Projection: 2-1/2" (63 mm)
 Materials: Brass, bronze
 Finishes: US3, US26D
 Fasteners: #14 x 1-1/4" wood thread
 Notes: Concealed mounting



940P

Coat Hook - Double

Overall Height: 4-11/16" (119 mm)
 Top Projection: 3-15/16" (100 mm)
 Bottom Projection: 2-1/8" (54 mm)
 Material Thickness: 1/4" (6 mm)
 Fasteners: Two (2) #10 x 1" FPHWS



903P

Coat Hook - Long Double

Diameter: 1" (25 mm)
 Projection: 2-1/2" (63 mm)
 Materials: Brass, bronze
 Finishes: US3, US26D
 Fasteners: #14 x 1-1/4" wood thread
 Notes: Concealed mounting



941P

Coat Hook - Single

Overall Height: 2-5/16" (59 mm)
 Projection: 2-1/8" (54 mm)
 Material Thickness: 1/4" (6 mm)
 Fasteners: Two (2) #10 x 1" FPHWS



936P

Coat Hook Single Angled

Base Diameter: 1-15/16" (49 mm)
 Hook Diameter: 11/16" (17 mm)
 Projection: 3-5/16" (84 mm)
 Materials: Brass, bronze
 Finishes: US3, US26D
 Notes: Concealed mounting





945P
Double Coat Hook - Surface Mounting
 Overall Height: 5-1/2" (140 mm)
 Projection: 3-5/16" (84 mm)
 Materials: Brass, bronze
 Finishes: US3, US26D
 Fasteners: Four (4) #10 x 1" FPHWS w/ anchors



952P
Coat Hook - Single
 O/A Height: 2-13/16" (71 mm)
 Projection: 2-7/32" (56 mm)
 Materials: Brass, bronze
 Finishes: US3, US26D
 Notes: Concealed mounting



946P
Double Coat Hook - Concealed Mounting
 Overall Height: 5-1/2" (140 mm)
 Projection: 3-11/16" (94 mm)
 Materials: Brass, bronze
 Finishes: US3, US26D
 Fasteners: Two (2) #10 x 1" FPHWS w/ anchors
 Notes: Concealed mounting



956P
Double Coat Hook - Angled
 Overall Height: 5-11/16" (144 mm)
 Projection: 3-23/32" (95 mm)
 Materials: Brass, bronze
 Finishes: US3, US26D
 Notes: Concealed mounting



951P
Coat Hook - Double
 O/A Height: 5-3/4" (146 mm)
 Projection: 2-3/4" (70 mm)
 Materials: Brass, bronze
 Finishes: US3, US26D
 Notes: Concealed mounting



957P
Coat Hook
 Projection: 1-3/4" (45 mm)
 Base Diameter: 3/4" (19 mm)
 Materials: Brass, bronze
 Finishes: US3, US26D
 Fasteners: #10 x 1" wood thread
 Notes: Concealed mounting



TRIM & AUXILIARY



22N

Edge Pull for Sliding Doors

Certification:	Meets ANSI A156.14 for D2801
Size:	31/32" x 4-1/4" x 3/8" thick (25 mm x 108 mm x 9.5 mm)
Lever Extension:	2-19/32" (66 mm)
Materials:	Brass
Finishes:	US3, US26D
Fasteners:	Two (2) #6 x 3/4" FPHWS



330D

Pocket Door Latch

Certification:	Meets ANSI A156.14 for D0821
Size:	2-3/4" x 2-1/2" (70 mm x 64 mm)
Extension of Finger Piece:	1-3/8" (35 mm)
Materials:	Brass
Finishes:	US3, US5, US10B, US15A, US19, US26, US26D
Fasteners:	Two (2) #6 x 5/8" OPHWS
Notes:	For use with 1-3/8" - 1-3/4" (35 mm - 45 mm) door



330L

Pocket Door Privacy Latch

Certifications:	Meets ANSI A156.14 for D0831
Size:	2-3/4" x 2-1/2" (70 mm x 64 mm)
Extension of Finger Piece:	1-3/8" (35 mm)
Strike Size:	1" x 2-1/4" (25 mm x 57 mm)
Materials:	Brass
Finishes:	US3, US5, US10B, US15, US15A, US19, US26, US26D
Fasteners:	Two (2) #6 x 5/8" OPHWS and two (2) #6 x 3/4" FPHWS
Notes:	For use with 1-3/8" (35 mm) door



330M

Pocket Door Privacy Latch

Certifications:	Meets ANSI A156.14 for D0831
Size:	2-3/4" x 2-1/2" (70 mm x 64 mm)
Extension of Finger Piece:	1-3/8" (35 mm)
Strike Size:	1" x 2-1/4" (25 mm x 57 mm)
Materials:	Brass
Finishes:	US3, US5, US10B, US15, US15A, US19, US26, US26D
Fasteners:	Two (2) #6 x 5/8" OPHWS and two (2) #6 x 3/4" FPHWS
Notes:	For use with 1-3/4" (45 mm) door



2610

Flush Cup Finger Pull

Overall Diameter:	31/32" (24.5 mm)
Finger Pull Diameter:	3/4" (19 mm)
Pull Clearance:	5/16" (8 mm)
Projection:	1/32" (.8 mm)
Materials:	Solid brass
Finishes:	US3, US4, US5, US10A, US15, US15A, US26, US26D, ABA
Notes:	<ul style="list-style-type: none">• For use on bi-fold, by-pass or pocket applications• Built-in prong design eliminates the need for screws or brads





2620

Flush Cup Pull

Overall Diameter: 2-1/16" (52 mm)
 Finger Pull Diameter: 1-11/16" (43 mm)
 Pull Clearance: 11/32" (8.7 mm)
 Projection: 5/64" (2 mm)
 Materials: Solid brass
 Finishes: US3, US4, US5, US10A, US15, US15A, US26, US26D, ABA
 Notes:

- For use on bi-fold, by-pass or pocket applications
- Built-in prong design eliminates the need for screws or brads



2630

Flush Cup Pull

Overall Diameter: 2-7/16" (62 mm)
 Finger Pull Diameter: 2-1/16" (52 mm)
 Pull Clearance: 11/32" (8.7 mm)
 Projection: 3/32" (2.4 mm)
 Materials: Solid brass
 Finishes: US3, US4, US5, US10A, US15, US15A, US26, US26D, ABA
 Notes:

- For use on bi-fold, by-pass or pocket applications
- Built-in prong design eliminates the need for screws or brads



2640

Oblong Flush Pull

Size: 1-5/16" x 2-3/4" (33 mm x 70 mm)
 Cup Clearance: 5/16" (8 mm)
 Materials: Solid brass
 Finishes: US3, US4, US5, US10A, US15, US15A, US26, US26D, ABA
 Fasteners: Two (2) #6 x 5/8" OPHWS
 Notes: For use on bi-fold, by-pass or pocket applications



9558

Wood Knob

Diameter: 1-1/2" (38 mm)
 Materials: Solid wood
 Notes:

- For use on bi-fold applications
- Will accept paint or stain



9566

Knob

Diameter: 1-1/4" (32 mm)
 Projection: 1" (25 mm)
 Materials: Die Cast Zinc
 Finishes: US3, US4, US5, US10A, US10B, US15, US15A, US26, US26D
 Fasteners: One (1) 8-32 x 1-3/4" PPHMS and one (1) 8-32 x 2" PPHMS
 Notes: For use on bi-fold applications on doors 3/4" (19 mm) to 1-3/8" (35 mm) thick





TRIM & AUXILIARY



9567

Rose

- Base Diameter: 1-3/4" (45 mm)
Projection: 15/32" (12 mm)
Materials: Die cast zinc
Finishes: US3, US4, US5, US10A, US10B, US15, US15A, US26, US26D
Fasteners: One (1) 8-32 x 1-3/4" PPHMS and one (1) 8-32 x 2" PPHMS
Notes:
 - For use on bi-fold applications on doors 3/4" (19 mm) to 1-3/8" (35 mm) thick
 - For use with 9566 knob



9865

Flush Cup Pull

- Overall Diameter: 1-31/32" (50 mm)
Finger Pull Diameter: 1-19/32" (40 mm)
Pull Clearance: 11/32" (8.7 mm)
Projection: 5/64" (2 mm)
Materials: Tan color ABS plastic
Notes:
 - For use on bi-fold, by-pass or pocket applications
 - Built-in prong design eliminates the need for screws or brads



9882

Pocket Door Edge Pull

- Face Plate Size: 3/4" x 3 - 7/8" (19 mm x 98 mm)
Finger Pull Extends: 3/4" (19 mm)
Materials: Solid brass
Finishes: US3, US4, US10, US10B, US26, US26D
Fasteners: Two (2) #6 x 5/8" FPHWS
Notes:
 - Ideal for narrow and standard door thicknesses
 - Automatic spring return



9884

Pocket Door Edge Pull

- Faceplate: 21/32" x 3-1/2" (16.5 mm x 89 mm)
Finger Pull Extends: 1-1/16" (27 mm)
Materials: Die cast zinc
Finishes: US3
Fasteners: Two (2) #6 x 5/8" FPHWS
Notes: Ideal for narrow and standard door thicknesses





336A
Door Edge Filler Plate - 161 Prep
 Size: 1-1/8" x 2-1/4"
 (29 mm x 57 mm)
 Thickness: 0.125" (3.2 mm)
 Materials: Primed steel



336G
Door Edge Filler Plate - Square
 Size: 1-3/4" x 5"
 (38 mm x 127 mm)
 Thickness: 0.134" (3.4 mm)
 Materials: Primed steel



336B
Door Edge Filler Plate - 86 Prep
 Size: 1-1/4" x 8"
 (32 mm x 203 mm)
 Thickness: 0.180" (4.5 mm)
 Materials: Primed steel



336H
Door Edge Filler Plate - Beveled
 Size: 1-1/2" x 5"
 (38 mm x 127 mm)
 Thickness: 0.134" (3.4 mm)
 Materials: Primed steel
 Notes: For handed doors



336C
Door Face Filler Plate - Deadbolt
 Size: 1-3/4" (45 mm)
 diameter
 Thickness: 0.055" (1.4 mm)
 Materials: Primed steel



336J
Flush Bolt Strike Filler Plate - Frame
 Size: 15/16" x 2-1/4"
 (24 mm x 57 mm)
 Thickness: 0.083" (2.1 mm)
 Materials: Primed steel



336D
Door Face Filler Plate - 161 Prep
 Size: 2-5/8" (67 mm)
 diameter
 Thickness: 0.055" (1.4 mm)
 Materials: Primed steel



336K
Flush Bolt Filler Plate - Door
 Size: 1" x 6-3/4"
 (25 mm x 172 mm)
 Thickness: 0.134" (3.4 mm)
 Materials: Primed steel



336E
Door Edge Filler Plate - Square
 Size: 1-3/4" x 4-1/2"
 (45 mm x 114 mm)
 Thickness: 0.134" (3.4 mm)
 Materials: Primed steel



336L
Hinge Filler Plate - Frame
 Size: 1-5/8" x 4-1/2"
 (41 mm x 114 mm)
 Thickness: 0.134" (3.4 mm)
 Materials: Primed steel



336F
Door Edge Filler Plate - Bevel
 Size: 1-1/2" x 4-1/2"
 (38 mm x 114 mm)
 Thickness: 0.134" (3.4 mm)
 Materials: Primed steel
 Notes: For handed doors



TRIM & AUXILIARY



336M

Hinge Filler Plate - Frame

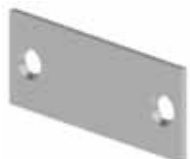
Size: 1-5/8" x 5"
(41 mm x 127 mm)
Thickness: 0.134" (3.4 mm)
Materials: Primed steel



336N

Latch Adapter Filler Plate - 86 to 161 Edge Prep

Size: 1-1/4" x 8"
(32 mm x 203 mm)
Thickness: 0.238" (6 mm)
Materials: Primed steel



336P

Deadlock Strike Filler Plate - Frame

Size: 1-1/8" x 2-3/4"
(29 mm x 70 mm)
Thickness: 0.083" (2.1 mm)
Materials: Primed steel



336Q

ASA Strike Filler Plate - Frame

Size: 1-1/4" x 4-7/8"
(32 mm x 124 mm)
Thickness: 0.093" (2.4 mm)
Materials: Primed steel



336R

Cylindrical Lock Strike Filler Plate - Frame

Size: 1-1/8" x 2-3/4"
(29 mm x 70 mm)
Thickness: 0.083" (2.1 mm)
Materials: Primed steel



337A

Template Hinge Shim

Size: 1-7/16" x 4-1/2"
(37 mm x 114 mm)
Thickness: 0.028" (0.7 mm)
Materials: Primed steel



337B

Template Hinge Shim

Size: 1-7/16" x 4-1/2"
(37 mm x 114 mm)
Thickness: 0.065" (1.7 mm)
Materials: Primed steel



337C

Template Hinge Shim

Size: 1-7/16" x 5"
(37 mm x 127 mm)
Thickness: 0.028" (0.7 mm)
Materials: Primed steel



337D

Template Hinge Shim

Size: 1-7/16" x 5"
(37 mm x 127 mm)
Thickness: 0.065" (1.7 mm)
Materials: Primed steel





PUSH

350H | 350L

Engraved Plastic Sign - Push (350H) and Pull (350L)

Certifications: Meets ANSI A156.16 L03201
 Materials: 0.125" (3.2 mm) thick plastic
 Lettering: 3/4" (19 mm) Helvetica
 Size: 2" x 4" (51 mm x 102 mm)
 Fasteners: Double sided pressure sensitive tape or screws (specify)
 Colors:

- Brown (W1) with white lettering
- Black (W2) with white lettering
- Blue (W3) with white lettering
- Silver (B1) with black lettering
- Gold (B2) with black lettering

 Notes: Signs are individually packed in a poly bag

PULL

MEN

350M | 350W

Engraved Plastic Sign - Men (350M) and Women (350W)

Certifications: Meets ANSI A156.16 L03201
 Materials: 0.125" (3.2 mm) thick plastic
 Lettering: 3/4" (19 mm) Helvetica
 Size: 2" x 5" (51 mm x 127 mm)
 Fasteners: Double sided pressure sensitive tape or screws (specify)
 Colors:

- Brown (W1) with white lettering
- Black (W2) with white lettering
- Blue (W3) with white lettering
- Silver (B1) with black lettering
- Gold (B2) with black lettering

 Notes: Signs are individually packed in a poly bag

WOMEN

635

350R

Engraved Plastic Sign - Number

Certifications: Meets ANSI A156.16 L03201
 Materials: 0.125" (3.2 mm) thick plastic
 Lettering: 3/4" (19 mm) Helvetica
 Size: 2" x 4" (51 mm x 102 mm)
 Fasteners: Double sided pressure sensitive tape or screws (specify)
 Colors:

- Brown (W1) with white lettering
- Black (W2) with white lettering
- Blue (W3) with white lettering
- Silver (B1) with black lettering

 Notes: Signs are individually packed in a poly bag

P
H
U
S
H

P
U
L
L

351H | 351L

Engraved Plastic Sign - Push (351H) and Pull (351L)

Certifications: Meets ANSI A156.16 L03201
 Materials: 0.125" (3.2 mm) thick plastic
 Lettering: 3/4" (19 mm) Helvetica
 Size: 1" x 4-1/2" (25 mm x 114 mm)
 Fasteners: Double sided pressure sensitive tape or screws (specify)
 Colors:

- Brown (W1) with white lettering
- Black (W2) with white lettering
- Blue (W3) with white lettering
- Silver (B1) with black lettering
- Gold (B2) with black lettering

 Notes: Signs are individually packed in a poly bag





TRIM & AUXILIARY



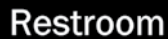
352M | 352W

Engraved Plastic Sign - Men (352M) and Women (352W)

Certifications: Meets ANSI A156.16 L03201
 Materials: 0.125" (3.2 mm) thick plastic
 Lettering: 3/4" (19 mm) Helvetica
 Size: 352M - 2-1/2" x 6" (64 mm x 152 mm)
 352W - 2-1/2" x 7" (64 mm x 178 mm)
 Fasteners: Double sided pressure sensitive tape or screws (specify)
 Colors:

- Brown (W1) with white lettering
- Black (W2) with white lettering
- Blue (W3) with white lettering
- Silver (B1) with black lettering
- Gold (B2) with black lettering

 Notes: Signs are individually packed in a poly bag



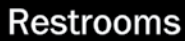
354A | 354B

Engraved Plastic Sign - Restroom(s)

Certifications: Meets ANSI A156.16 L03201
 Materials: 0.125" (3.2 mm) thick plastic
 Lettering: 3/4" (19 mm) Helvetica
 Size: 2" x 6" (51 mm x 127 mm)
 Fasteners: Double sided pressure sensitive tape or screws (specify)
 Colors:

- Black (W2) with white lettering
- Blue (W3) with white lettering

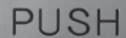
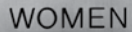
 Notes: Signs are individually packed in a poly bag



360M | 360W

Engraved Metal Sign - Men (360M) and Women (360W)

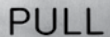
Certifications: Meets ANSI A156.16 L03201
 Materials: 0.050" (1.3 mm) thick metal
 Lettering: 3/4" (19 mm) Helvetica black filled
 Size: 2" x 6" (51 mm x 152 mm)
 Fasteners: Double sided pressure sensitive tape or screws (specify)
 Finishes: US3, US28, US32D
 Notes: Signs are individually packed in a poly bag

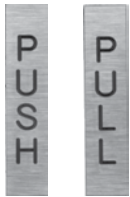


361H | 361L

Engraved Metal Sign - Push (361H) and Pull (361L)

Certifications: Meets ANSI A156.16 L03201
 Materials: 0.050" (1.3 mm) thick metal
 Lettering: 3/4" (19 mm) Helvetica black filled
 Size: 2" x 4" (51 mm x 102 mm)
 Fasteners: Double sided pressure sensitive tape or screws (specify)
 Finishes: US3, US10B, US28, US32D
 Notes: Signs are individually packed in a poly bag





362H | 362L

Engraved Metal Sign - Push (362H) and Pull (362L)

Certifications: Meets ANSI A156.16 L03201
 Materials: 0.050" (1.3 mm) thick metal
 Lettering: 3/4" (19 mm) Helvetica black filled
 Size: 1" x 4-1/2" (25 mm x 114 mm)
 Fasteners: Double sided pressure sensitive tape or screws (specify)
 Finishes: US3, US10B, US28, US32D
 Notes: Signs are individually packed in a poly bag



364L

Plastic International Handicap Symbol Sign

Certifications: Meets ANSI A156.16 L03201
 Materials: 0.125" (3.2 mm) thick plastic 1/32" (0.8 mm) raised HANDICAP symbol
 Size: 6" x 6" (152 mm x 152 mm)
 Fasteners: Double sided pressure sensitive tape standard or screws (specify)
 Colors:

- Brown (W4) with raised white symbol
- Black (W2) with raised white symbol
- Blue (W3) with raised white symbol

 Notes: Signs are individually packed in a poly bag



364M | 364S

Plastic International Handicap Symbol Sign

Certifications: Meets ANSI A156.16 L03201
 Materials: 0.0625" (1.6 mm) thick plastic raised HANDICAP symbol
 Size: 364M - 4" x 4" (102 mm x 102 mm)
 364S - 3" x 3" (76 mm x 76 mm)
 Fasteners: Double sided pressure sensitive tape standard or screws (specify)
 Colors: Blue (W3) with raised white symbol
 Notes: Signs are individually packed in a poly bag



364N

Engraved International No Smoking Symbol Sign

Certifications: Meets ANSI A156.16 L03201
 Materials: 0.125" (3.2 mm) thick plastic
 Size: 6" x 6" (152 mm x 152 mm)
 Fasteners: Pressure sensitive tape standard or screws (specify)
 Colors: Red (W4) with raised white symbol
 Notes: Signs are individually packed in a poly bag



365M | 365W

ADA Tactile Sign - Men (365M) and Women (365W)

Certifications: Meets ANSI A156.16 L03201
 Materials: 0.125" (3.2 mm) thick plastic
 Size: 6" x 8" (152 mm x 203 mm)
 Fasteners: Double sided pressure sensitive tape
 Colors:

- Brown (W1) with raised white symbol
- Black (W2) with raised white symbol
- Blue (W3) with raised white symbol

 Notes:

- Signs are individually packed in a poly bag
- Grade 2 Braille Translation conforming to section 4.30 requirements





TRIM & AUXILIARY

325

366R

ADA Tactile Sign - Room Number

- Certifications: Meets ANSI A156.16 L03201
Materials: 0.125" (3.2 mm) thick plastic
Size: 2-1/2" x 5" (64 mm x 127 mm)
Fasteners: Double sided pressure sensitive tape
Colors:
 - Brown (W1) with raised white lettering
 - Black (W2) with raised white lettering
 - Blue (W3) with raised white letteringNotes:
 - Signs are individually packed in a poly bag
 - Grade 2 Braille Translation conforming to section 4.30 requirements



366S

ADA Tactile Sign - Stairs

- Certifications: Meets ANSI A156.16 L03201
Materials: 0.125" (3.2 mm) thick plastic
Size: 6" x 8" (152 mm x 203 mm)
Fasteners: Double sided pressure sensitive tape
Colors:
 - Brown (1) with white symbol and lettering
 - Black (2) with white symbol and lettering
 - Blue (3) with white symbol and letteringNotes:
 - Signs are individually packed in a poly bag
 - Grade 2 Braille Translation conforming to section 4.30 requirements



368E

ADA Tactile Sign - Exit

- Certifications: Meets ANSI A156.16 L03201
Materials: 0.125" (3.2 mm) thick plastic
Size: 6" x 8" (152 mm x 203 mm)
Fasteners: Double sided pressure sensitive tape
Colors:
 - Brown (1) with white symbol and lettering
 - Black (2) with white symbol and lettering
 - Blue (3) with white symbol and letteringNotes:
 - Signs are individually packed in a poly bag
 - Grade 2 Braille Translation conforming to section 4.30 requirements



368M | 368W

ADA Tactile Sign - Men (368M) and Women (368W) with Handicap

- Certifications: Meets ANSI A156.16 L03201
Materials: 0.125" (3.2 mm) thick plastic
Size: 6" x 8" (152 mm x 203 mm)
Fasteners: Double sided pressure sensitive tape
Colors:
 - Brown (1) with white symbol and lettering
 - Black (2) with white symbol and lettering
 - Blue (3) with white symbol and letteringNotes:
 - Signs are individually packed in a poly bag
 - Grade 2 Braille Translation conforming to section 4.30 requirements





368U

ADA Tactile Sign - Unisex

- Certifications: Meets ANSI A156.16 L03201
 Materials: 0.125" (3.2 mm) thick plastic
 Size: 8" x 8" (203 mm x 203 mm)
 Fasteners: Double sided pressure sensitive tape
 Colors:
 - Brown (1) with white symbol and lettering
 - Black (2) with white symbol and lettering
 - Blue (3) with white symbol and lettering
 Notes:
 - Signs are individually packed in a poly bag
 - Grade 2 Braille Translation conforming to section 4.30 requirements



369L | 369R

ADA Tactile Sign - Access Left (369L) and Access Right (369R)

- Certifications: Meets ANSI A156.16 L03201
 Materials: 0.125" (3.2 mm) thick plastic
 Size: 6" x 8" (152 mm x 203 mm)
 Fasteners: Double sided pressure sensitive tape
 Colors:
 - Brown (1) with white symbol and lettering
 - Black (2) with white symbol and lettering
 - Blue (3) with white symbol and lettering
 Notes:
 - Signs are individually packed in a poly bag
 - Grade 2 Braille Translation conforming to section 4.30 requirements



370M | 370U | 370W

ADA Tactile Sign - Restroom, Men, and Women

- Certifications: Meets ANSI A156.16 L03201
 Materials: 9/16" (14.3 mm) plastic
 Size:
 - 370U - 12" (305 mm) diameter
 - 370W - 12" (305 mm) diameter
 - 370M - 10-1/2" (267 mm) side
 Fasteners: Double sided pressure sensitive tape
 Color: Blue (3) with white raised symbol and lettering
 Notes:
 - Signs are individually packed in a poly bag
 - Grade 2 Braille Translation conforming to section 4.30 requirements





TRIM & AUXILIARY



274B

Door Guard Protection Plate

- Size: 1-1/8" x 1" x 1/2" (28.5 mm x 25 mm x 12.5 mm)
Materials: Brass
Finishes: US3, US4, US10, US10B, US15, US26, US26D
Notes:
 - Used when additional protective plate is required for frame application
 - Mounted with double-sided tape
 - To be used with the 274D



274C

Shim for Door Guard

- Size: 1-1/8" x 1-1/16" (29 mm x 27 mm)
Thickness: 3/32" (2.3 mm)
Materials: Black rubber
Notes: To be used with the 274D



274D

Door Guard

- Certifications: Meets ANSI A156.16 for L13041
Arm Length: 4-1/2" (114 mm)
Materials: Brass
Finishes: US3, US4, US10, US10B, US15, US26, US26D
Fasteners: Three (3) #6 x 1-1/2" OPHWS, three (3) #6 x 3/4" OPHWS, and three (3) 6-32 x 3/4" FPHMS
Notes:
 - Permits door to be slightly opened to allow viewing
 - Hinged bar allows the door guard to be positioned 180 degrees away from the door when not in use
 - Includes door guard protective plate 274B



300D

Chain Door Check

- Certifications: Meets ANSI A156.16 for L02231
Lengths:
 - 25-1/2" (648 mm) recommended for use with 36" (914 mm) wide door
 - 30-1/2" (775 mm) recommended for use with 42" (1067 mm) wide doorBase Plate: 1-1/2" x 1-1/2" (38 mm x 38 mm)
Materials: Cast brass base with welded steel chain
Finish: US26D
Fasteners: Ten (10) #8 x 1" FPHSMS
Notes:
 - Tear resistant grey vinyl cover
 - Can be ordered through door mounting with grommet nut sets at extra charge
 - 440 pound load strength
 - Designed for full size exterior doors





301D

Heavy Duty Hinge Pin Stop

Certifications: Meets ANSI A156.16 for L02223
 Materials: Wrought steel with rubber bumpers
 Finishes: US3, US26D
 Notes:

- Works with 1/4" (6 mm) and 5/16" (8 mm) hinge pins
- For use where standard door stops are not desirable
- Positive slip proof design
- Adjustable from 70 degrees to 100 degrees
- Must purchase an NRP hinge for use with this pin stop



303W

Handrail Bracket

Certifications: Meets ANSI A156.16 for L03061
 Base Diameter: 3-5/32" (80 mm)
 Base to Center of Rail: 2-3/4" (70 mm)
 Materials: Brass
 Finishes: US3, US4, US10, US10B, US15A, US19, US26, US26D
 Fasteners: Three (3) #10 x 1-1/4" FPHWS, three (3) plastic anchors, three (3) 10-24 x 13/16" FPHMS, and three (3) 10-24 lead anchors



305D

Wire Pull

Certifications: Meets ANSI A156.9 for B02011
 Diameter of Rod: 5/16" (7.9 mm)
 Projection: 1-9/32" (32.5 mm)
 CTC Lengths: 3" (76 mm), 3-1/2" (89 mm), 4" (102 mm)
 Materials: Brass
 Finishes: US3, US4, US10, US10B, US26, US26D
 Fasteners: Two (2) 8-32 x 1" TPHMS



307D

Door Silencer

Certifications: Meets ANSI A156.16 for L03011
 Diameter: 1/2" (13 mm)
 Projection: 1/8" (3 mm)
 Materials: Rubber
 Notes:

- For use with metal frames
- Proper installation eliminates door rattle and provides constant tension for door latches or locks



308D

Door Silencer

Certifications: Meets ANSI A156.16 for L0302
 Projection: 9/64" (3.5 mm)
 Base: 3/8" x 3/4" (9.5 mm x 19 mm)
 Length: 3/4" (19 mm)
 Materials: Rubber
 Notes:

- For use with wood frames
- Eliminates door rattle when door is latched
- Proper installation eliminates door rattle and provides constant tension for door latches or locks





TRIM & AUXILIARY



310C

Conversion Kit

- Filler Plate: 1-1-8" x 3-3/8" (29 mm x 86 mm)
Strike: 1-11/16" x 2-1/4" (43 mm x 57 mm)
Materials: Brass
Finishes: US10B, US26D
Notes:
 - Packed with filler plate, strike and fasteners
 - Change door from Roller Latch to Push/Pull Latch



322V

Wrought Door Knocker with Viewer

- Certifications: Meets ANSI A156.16 for L03161
Size: 2-3/16" x 3-1/4" (56 mm x 83 mm)
Materials: Brass
Finishes: US3, US4, US10, US26D
Fasteners: Three (3) #6 x 3/4" TPHSMS
Notes: Requires 1/2" (13 mm) hole for viewer



1755

160° Door Viewer

- Certifications: Meets ANSI A156.16 for L03222
Materials: Brass
Finishes: US3, US4, US5, US10A, US15, US15A, US26, US26D
Notes:
 - For doors up to 2-1/8" (54 mm) thick, adjustable
 - Requires 1/2" (13 mm) hole for viewer
 - Tamper resistant
 - 90 minute fire rated
 - One way viewer



1756

200° Door Viewer

- Certifications: Meets ANSI A156.16 for L03221
Materials: Brass
Finishes: US3, US4, US5, US10A, US15, US15A, US26, US26D
Notes:
 - For doors up to 2-1/8" (54 mm) thick, adjustable
 - Requires 9/16" (14 mm) hole for viewer
 - Tamper resistant
 - 90 minute fire rated
 - One way viewer





208

Kick Down Door Stop

- Base: 1-5/8" x 1-7/8" (41 mm x 48 mm)
- Arm: 3-7/8" (98 mm)
- Materials: Aluminum alloy
- Finishes: US3, US4, US5, US10A, US15A, US15, US26, US26D, ABA
- Fasteners: Three (3) #6 x 3/4" FPHWS
- Notes:
 - Polybag (1 each) with screws
 - Provides simple hold and release with a touch of the foot
 - 3" (76 mm) max door to floor clearance



209

Floor Door Stop

- Height: 1-1/4" (32 mm)
- Base Diameter: 1-3/32" (28 mm)
- Tip Diameter: 19/32" (15 mm)
- Materials: Zinc alloy
- Finishes: US3, US4, US5, US10A, US15A, US15, US26, US26D, ABA
- Fasteners: One (1) #8 x 2" FPHWS
- Notes:
 - Non-marking white tip
 - 3/8" (9.5 mm) max door to floor clearance



BL6209

Floor Door Stop

- Height: 1-3/8" (35 mm)
- Base Diameter: 13/16" (21 mm)
- Tip Diameter: 1/2" (13 mm)
- Materials: Zinc alloy
- Finishes: US3, US4, US5, US10A, US15A, US15, US26, US26D, ABA
- Fasteners: #8 x 11/32" thread
- Notes:
 - Non-marking white tip
 - 150 per case
 - 1/2" (13 mm) max door to floor clearance
 - Hex shape near the base allows usage of a wrench for easier installation



210

Rigid Door Stop

- Projection: 3" (76 mm)
- Tip Diameter: 11/16" (17.5 mm)
- Base Diameter: 1" (25 mm)
- Materials: Zinc alloy
- Finishes: US3, US4, US5, US10A, US10R, US15A, US15, US26, US26D, ABA
- Fasteners: #8 x 5/8" thread
- Notes: Bumper made of rubber



TRIM & AUXILIARY



211

Flexible Door Stop

Projection: 3-1/8" (79 mm)
Tip Diameter: 9/16" (14 mm)
Base Diameter: 1" (25 mm)
Materials: Zinc alloy base
Finishes: US3, US4, US5, US10A, US10R, US15A, US15, US26, US26D, ABA
Fasteners: One (1) #8 x 3/4" PPHWS
Notes:

- Bumper made of rubber
- Flexible spring



BL6211

Flexible Door Stop

Projection: 3" (76 mm)
Tip Diameter: 7/16" (11 mm)
Base Diameter: 3/4" (19 mm)
Materials: Zinc alloy base
Finishes: US3, US4, US5, US10A, US10R, US15A, US15, US26, US26D, ABA
Fastener: #8 x 11/32" thread
Notes:

- Bumper made of rubber
- Flexible spring



212

Hinge Pin Door Bumper

Materials: Zinc alloy base
Finishes: US3, US4, US5, US10A, US10R, US15A, US15, US26, US26D, ABA
Notes:

- Non-marking white plastic tip
- For use with residential hinges
- For use where standard door stops are not desirable
- For use with narrow trim
- Adjustable from 80 degrees to 120 degrees



BL6212

Hinge Pin Door Bumper

Materials: Zinc alloy base
Finishes: US3, US4, US5, US10A, US10R, US15A, US15, US26, US26D, ABA
Notes:

- Non-marking white plastic tip
- For use with residential hinges
- For use where standard door stops are not desirable
- For use with narrow trim
- Adjustable from 80 degrees to 120 degrees



1412

Door Guard

Arm Length: 4" (102 mm)
Materials: Zinc alloy base
Finishes: US3, US4, US5, US10A, US15A, US15, US26, US26D, ABA
Fasteners: Seven (7) #6 x 3/4" FPHWS
Notes:

- Provides extra security from inside door
- Limits door opening when latch is thrown
- Polybag (1 each) with screws





1413

Flush Bolt

- Faceplate: 3/4" x 6" (19 mm x 181 mm)
- Strike: 7/8" x 1-3/4" (22 mm x 45 mm)
- Bolt Diameter: 1/2" (13 mm)
- Bolt Throw: 15/16" (24 mm)
- Bolt Backset: 7/16" (11 mm)
- Materials: Brass faceplate with steel components
- Finishes: US3, US4, US5, 10A, 10R, US15A, US15, US26, US26D, ABA, AN
- Fasteners: Four (4) #6 x 3/4" FPHWS
- Notes:
 - Polybag (1 each) with strikeplate and screws
 - Square corners



1414

Flush Bolt

- Faceplate: 3/4" x 6" (19 mm x 181 mm)
- Strike: 7/8" x 1-3/4" (22 mm x 45 mm)
- Bolt Diameter: 1/2" (12.7 mm)
- Bolt Throw: 15/16" (24 mm)
- Bolt Backset: 7/16" (11 mm)
- Materials: Brass faceplate with steel components
- Finishes: US3, US4, US5, 10A, 10R, US15A, US15, US26, US26D, ABA, AN
- Fasteners: Four (4) #6 x 3/4" FPHWS
- Notes:
 - Polybag (1 each) with strikeplate and screws
 - Rounded corners



1415

Strike Plate

- Size: 7/8" x 1-3/4" (22 mm x 45 mm)
- Finishes: US3, US10A, US15A, US15, US26D
- Fasteners: Two (2) #6 x 3/4" FPHWS
- Notes:
 - For use with 1413 and 1414 Flush Bolts
 - Packed (1 each) with Polybag and screws



1416

Single Route Flush Bolt

- Faceplate: 3/4" x 7-1/8" (19 mm x 181 mm)
- Strike: 21/32" x 1-1/2" (17 mm x 38 mm)
- Bolt Diameter: 5/16" (8 mm)
- Bolt Throw: 7/8" (22 mm)
- Bolt Backset: 3/8" (9.5 mm)
- Materials: Brass faceplate with steel components
- Finishes: US3, US4, US5, US10A, US10R, US15A, US15, US26, US26D, ABA
- Fasteners: Two (2) #8 x 1-1/2" FPHWS and two (2) #6 x 3/4" FPHWS
- Notes:
 - Polybag (1 each) with strikeplate and screws
 - Rounded corners
 - Single route for quick and simple door prep





TRIM & AUXILIARY



1418

Flush Bolt with Extension Rod

Faceplate:	23/32" x 7-3/8" (18 mm x 187 mm)
Strike:	5/8" x 1-1/2" (16 mm x 38 mm)
Bolt Diameter:	5/16" (8 mm)
Bolt Throw:	3/4" (19 mm)
Bolt Backset:	3/8" (9.5 mm)
Extension Rod Length:	16" (406 mm)
Materials:	Brass faceplate with steel components
Finishes:	US3, US4, US5, US10A, US10R, US15A, US15, US26, US26D, ABA
Fasteners:	Two (2) #8 x 1-1/2" FPHWS and two (2) #6 x 3/4" FPHWS
Notes:	<ul style="list-style-type: none">• Polybag (1 each) with strikeplate and screws• Rounded corners• Single route for quick and simple door prep



1419

Flush Bolt with Extension Rod

Faceplate:	3/4" x 7-1/8" (19 mm x 181 mm)
Strike:	5/8" x 1-1/2" (16 mm x 38 mm)
Bolt Diameter:	5/16" (8 mm)
Bolt throw:	3/4" (19 mm)
Bolt Backset:	5/16" (8 mm)
Materials:	Brass faceplate with steel components
Fasteners:	Two (2) #8 x 1-1/2" FPHWS and two (2) #6 x 3/4" FPHWS
Finishes:	US3, US4, US10A, US10R, US15, US26, US26D, ABA, AN
Notes:	Single route for quick and simple door prep



1439 | BL6439

Magnetic Catch - Light Weight

Catch:	1-1/16" x 2" (27 mm x 51 mm)
Strike:	7/8" x 1" (22 mm x 25 mm)
Materials:	Tan plastic case
Fasteners:	Two (2) #6 x 1/2" TPHWS and one (1) #4 x 1/2" FPHWS
Notes:	<ul style="list-style-type: none">• Polybag (1 each) with screws• Double sided magnet, self-aligning, 6 lb. pull• Self aligning magnet insures maximum pull• BL6439 is Builder's Pack Polybag (1 each) with screws



1445

Roller Latch

Hole Diameter:	13/16" (21 mm)
Hole Depth:	1-1/8" (29 mm)
Materials:	Zinc alloy base
Finishes:	US3, US4, US5, US10A, US10R, US15A, US15, US26, US26D, ABA
Fasteners:	Two (2) #4 x 3/4" FPHWS
Notes:	<ul style="list-style-type: none">• Polybag (1 each) with screws• Designed for use on cabinets and lightweight doors• Not intended for heavy weight applications





1446

Light Weight Ball Catch

- Faceplate: 1" x 2-1/4" (25 mm x 57 mm)
- Strike: 1-3/8" x 2-1/4" (35 mm x 57 mm)
- Hole Diameter: 1" (25 mm)
- Hole Depth: 1-1/4" (32 mm)
- Materials: Zinc
- Finishes: US3, US4, US5, US10A, US10R, US15A, US15, US26, US26D
- Fasteners: Four (4) #6 FPHWS
- Notes:
 - Designed for use on cabinets and light weight doors
 - Not intended for heavy weight applications
 - Ball adjusts in and out for various door and frame clearances
 - Polybag (1 each) with steel screws



1447

Light Weight Ball Catch

- Strike: 1-3/8" x 2-1/4" (35 mm x 57 mm)
- Faceplate: 1" (25 mm) diameter
- Hole Diameter: 15/16" (24 mm)
- Hole Depth: 1-1/4" (32 mm)
- Materials: Zinc
- Finishes: US3, US4, US5, US10A, US10R, US15A, US15, US26, US26D
- Fasteners: Two (2) #6 FPHWS
- Notes:
 - Designed for use on cabinets and light weight doors
 - Not intended for heavy weight applications
 - Ball adjusts in and out for various door and frame clearances
 - Polybag (1 each) with steel screws



1448

Strike Plate

- Size: 1-3/8" x 2-1/4" (35 mm x 57 mm)
- Finishes: US3, US4, US5, US10A, US10R, US15A, US15, US26, US26D, ABA
- Fasteners: Two (2) #6 FPHWS
- Notes: For use with 1446 and 1447 ball catches



1449

Drive In Ball Catch

- Faceplate: 1" (25 mm) diameter
- Hole Diameter: 15/16" (24 mm)
- Hole Depth: 1-1/4" (32 mm)
- Materials: Zinc
- Finishes: US4
- Packaging: 100 per box
- Notes:
 - Ball catch designed for use on cabinets and light weight doors
 - Not intended for heavyweight applications
 - Ball adjusts in and out for various door and frame clearances



TRIM & AUXILIARY



BL6793

Pole Sockets

Outside Diameter: 2-7/16" (62 mm)

Materials: Steel

Notes:

- For poles up to 1-3/8" (35 mm) diameter
- Flange design prevents accidental knock out of pole
- Polybag (2 each) with screws



BL6794

Pole Sockets

Outside Diameter: 2-3/16" (56 mm)

Materials: Plastic

Notes:

- For poles up to 1-3/8" (35 mm) diameter
- Polybag (2 each) with screws



1795

Closet Rod

Pole Diameter: 1" (25 mm)

Materials: Steel with bright zinc finish

Finishes: White enamel

Notes:

- Quick mount end
- High strength lock seam tubing
- Polybag (1 each) with screws



1797

Shelf Bracket

Materials: Steel ANSI B04051

Finishes: White Enamel

Fasteners: Two (2) #8 x 3/4" PPH tapping screws and two (2) #10 x 1-1/2" PPH tapping screws

Notes:

- For shelf and rod support
- Double welded heavy gauge steel construction embossed for added strength
- Holds 1-3/8" (35 mm) diameter rod
- Supports 12" (305 mm) shelf
- Bulk with screws





1798
Shelf Bracket

Materials:
Finishes:
Notes:

Steel ANSI B04051
White Enamel

- For shelf and rod support
- Heavy gauge steel construction embossed for added strength
- Holds 1-3/8" (35 mm) diameter rod
- Supports 12" (305 mm) shelf
- Bulk with screws



1799
Shelf Bracket - Adjustable

Materials:
Finishes:
Fasteners:

Steel ANSI B04051
White Enamel
Two (2) #8 x 3/4" PPH tapping screws and two (2) #10 x 1-1/2" PPH tapping screws

Notes:

- Adjustable shelf and rod support
- Heavy gauge steel construction embossed for added strength
- Holds 1-3/8" (35 mm) diameter rod
- Supports 12" (305 mm) shelf
- 3/4" (19 mm) adjustability
- Bulk with screws



1801
Shelf Bracket

Materials:
Finishes:
Fasteners:

Steel ANSI B04051
White enamel
Two (2) #8 x 3/4" PPH tapping screws and two (2) #10 x 1-1/2" PPH tapping screws

Notes:

- Less rod support
- Heavy gauge steel construction embossed for added strength
- Supports 12" (305 mm) shelf
- Bulk with screws



6601
Handrail Bracket

Projection:
Base to Center of Rail:
Materials:
Finishes:
Fasteners:
Notes:

3-1/4" (82.5 mm)
2-3/4" (70 mm)
Cast aluminum
US3, US4, US5, US10A, US10R, US15, US15A, US26, US26D, ABA
Three (3) #8 x 1-1/2" OPHWS and two (2) #8 x 3/4" OPHWS
Polybag (1 each) with wood screws and rail bracket



TRIM & AUXILIARY



BL6610

Coat and Hat Hook

Upper Projection: 2-13/16" (71 mm)

Lower Projection: 1-5/16" (33 mm)

Material: Cast steel

Finishes: US3, US4, US5, US10A, US15A, US15, US26, US26D, ABA

Fasteners: Two (2) #6 x 3/4" FPHWS

Notes:

- Polybag (1 each) with screws
- Builder's pack

